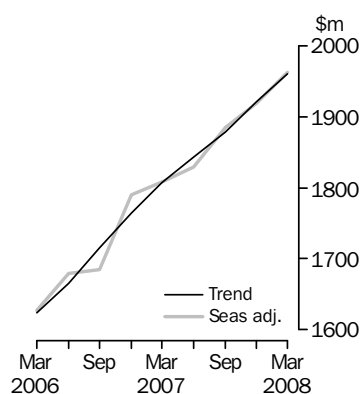


TOURIST ACCOMMODATION AUSTRALIA

EMBARGO: 11.30AM (CANBERRA TIME) MON 30 JUN 2008

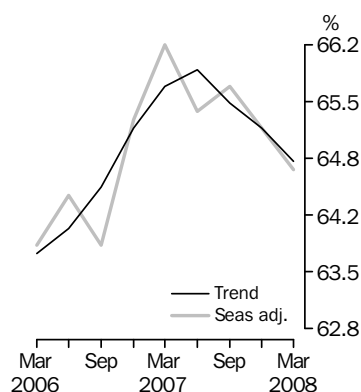
ACCOMMODATION TAKINGS

Australia



ROOM OCCUPANCY RATE

Australia



INQUIRIES

For further information about these and related statistics, contact the National Information and Referral Service on 1300 135 070.

KEY FIGURES

ACCOMMODATION WITH 15 ROOMS OR MORE

	Dec Qtr 07	Mar Qtr 08	Dec Qtr 07 to Mar Qtr 08	Mar Qtr 07 to Mar Qtr 08
Trend				
Takings from accommodation (\$m)	1 920.6	1 960.4	2.1 %	8.5 %
Room occupancy rate (%)	65.2	64.8	-0.4 pts	-0.9 pts
Seasonally Adjusted				
Takings from accommodation (\$m)	1 918.9	1 962.5	2.3 %	8.6 %
Room occupancy rate (%)	65.2	64.7	-0.5 pts	-1.5 pts

Note: Hotels, motels and serviced apartments

KEY POINTS

ACCOMMODATION TAKINGS

- In March quarter 2008, the estimate of total accommodation takings for hotels, motels and serviced apartments with 15 or more rooms increased by 2.1% to \$1,960.4 million compared with December quarter 2007.
- Over the same period, the seasonally adjusted estimate increased by 2.3% to \$1,962.5 million.

ROOM OCCUPANCY RATE

- The trend estimate of the room occupancy rate for hotels, motels and serviced apartments with 15 or more rooms decreased by 0.4 percentage points to 64.8% for March quarter 2008 compared to December quarter 2007.
- The room occupancy rate trend for hotels, motels and serviced apartments with 15 or more rooms has now been decreasing for three consecutive quarters. Growth in supply (rooms available) being greater than the growth in demand (rooms occupied) was the main factor in the decrease.
- The seasonally adjusted estimate decreased 0.5 percentage points to 64.7% for March quarter 2008 compared with December quarter 2007.

NOTES

FORTHCOMING ISSUES

ISSUE (Quarter)

RELEASE DATE

June 2008 26 September 2008

September 2008 6 January 2009

.....

ABOUT THIS ISSUE

This issue presents results from the March quarter 2008 Survey of Tourist Accommodation (STA) for the following categories of establishments:

- licensed hotels and resorts with facilities and 5 or more rooms
- motels, private hotels and guest houses with facilities and 5 or more rooms
- serviced apartments with 5 or more units
- caravan parks with 40 or more powered sites
- holiday flats, units and houses of letting entities with 15 or more rooms or units
- visitor hostels with 25 or more bed spaces.

DATA NOTES

As advised in the December quarter 2007 issue of this publication, Autoregressive Moving Averages (ARIMA) modelling has been incorporated into the seasonal adjustment process for the majority of the tourist accommodation series and all series have a changed treatment of the trading day component. As a result of these changes the seasonally adjusted and, to a lesser extent, the trend series have been revised. For further information, see paragraphs 22 and 23 of the Seasonal Adjustment section of the Explanatory Notes.

CHANGES IN THIS ISSUE

Additional time series spreadsheets have been introduced as part of this issue. They contain original series data for Hotels, Motels and Serviced Apartments with 5 or more rooms and can be found in the Details tab of Tourist Accommodation, Australia (cat. no. 8635.0) on the ABS website.

Brian Pink
Australian Statistician

CONTENTS

	<i>page</i>
Abbreviations	4
Summary of Findings	5

TABLES

ORIGINAL, SEASONALLY ADJUSTED AND TREND

1 Hotels, motels and serviced apartments with 15 or more rooms	10
---	----

SUMMARY

2 Hotels, motels and serviced apartments	12
3 Licensed hotels and resorts	14
4 Motels, private hotels and guest houses	16
5 Serviced apartments	18
6 Caravan parks	20
7 Holiday flats, units and houses	22
8 Visitor hostels	24

STAR GRADING

9 Hotels, motels and serviced apartments with 5-14 rooms	25
10 Hotels, motels and serviced apartments with 15 or more rooms	27
11 Hotels, motels and serviced apartments with 5 or more rooms	29

STATES AND TERRITORIES

12 Hotels, motels and serviced apartments with 5-14 rooms	31
13 Hotels, motels and serviced apartments with 15 or more rooms	34
14 Hotels, motels and serviced apartments with 5 or more rooms	37
15 Caravan parks, short-term	40
16 Caravan parks, long-term	43
17 Caravan parks, total	46
18 Holiday flats, units and houses, real estate agents	49
19 Holiday flats, units and houses, other letting entities	51
20 Holiday flats, units and houses, total	53
21 Visitor hostels	55

OTHER INFORMATION

Explanatory Notes	57
Glossary	64

ABBREVIATIONS

'000	thousand
\$'000	thousand dollars
\$m	million dollars
AAA	Australian Automobile Association
ABS	Australian Bureau of Statistics
ACT	Australian Capital Territory
ASGC	Australian Standard Geographical Classification
cat. no.	Catalogue number
GST	goods and services tax
no.	number
NSW	New South Wales
NT	Northern Territory
pts	percentage points
qtr	quarter
Qld	Queensland
SA	South Australia
SLA	statistical local area
STA	Survey of Tourist Accommodation
Tas.	Tasmania
Vic.	Victoria
WA	Western Australia

SUMMARY OF FINDINGS

ORIGINAL

*Hotels, motels and
serviced apartments*

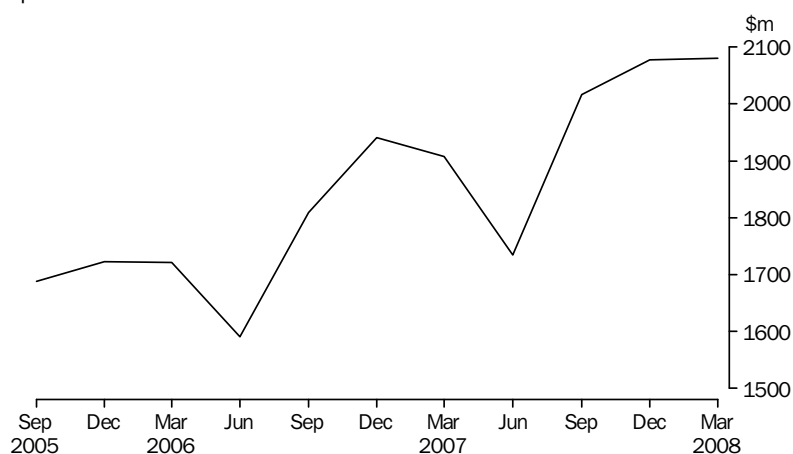
This summary contains key findings for original estimates. While trend and seasonally adjusted data are only available for hotels, motels and serviced apartments with 15 or more rooms and 5 or more rooms, original estimates have an additional data series comprising hotels, motels and serviced apartments with 5 to 14 rooms.

Original series are impacted by seasonal variations and irregular or non-seasonal influences and comparisons between quarters should be made with caution.

ACCOMMODATION TAKINGS

In March quarter 2008, accommodation takings were \$2,080.2 million for hotels, motels and serviced apartments with 5 or more rooms, comprising \$1,999.8 million for hotels, motels and serviced apartments with 15 or more rooms and \$80.4 million for hotels, motels and serviced apartments with 5 to 14 rooms.

TAKINGS FROM ACCOMMODATION, Hotels, motels and serviced apartments with 5 or more rooms—Australia



Accommodation takings in March quarter 2008 for hotels, motels and serviced apartments with 15 or more rooms were highest in New South Wales (\$672.0 million) and Queensland (\$498.7 million).

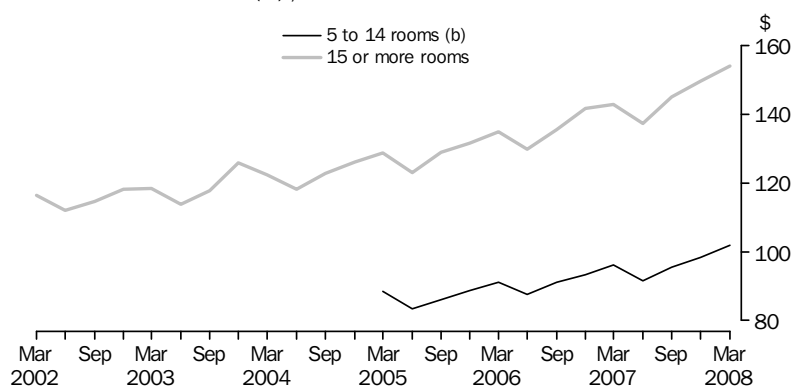
The March quarter 2008 average takings per room night occupied were \$151.07 for establishments with 5 or more rooms. This was heavily influenced by hotels, motels and serviced apartments with 15 or more rooms which contribute 96.1% to total takings, and had an average takings per room night occupied of \$154.05. The average for 5 to 14 room establishments was \$102.00.

SUMMARY OF FINDINGS *continued*

Hotels, motels and serviced apartments continued

ACCOMMODATION TAKINGS *continued*

AVERAGE TAKINGS (a), Australia



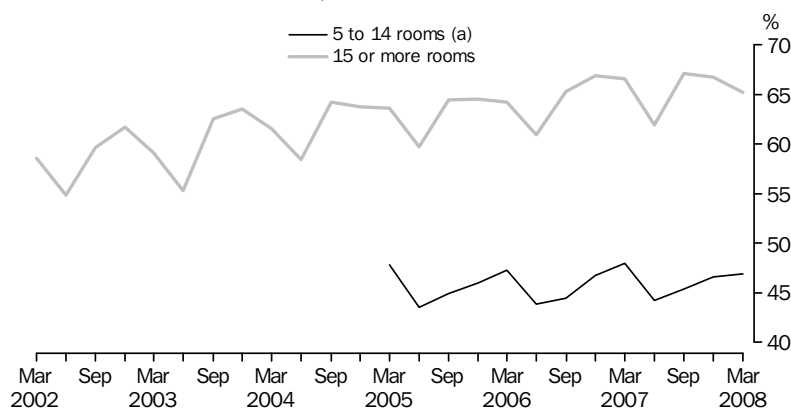
(a) Per room night occupied.

(b) These establishments were included in the survey from March 2005 onwards.

ROOM OCCUPANCY RATE

The room occupancy rate for hotels, motels and serviced apartments with 5 or more rooms was 63.8% in March quarter 2008. For hotels, motels and serviced apartments with 15 or more rooms, the room occupancy rate was 65.2%, while demand for 5 to 14 room hotels, motels and serviced apartments was lower, as reflected by a room occupancy rate of 46.9%.

ROOM OCCUPANCY RATE, Australia



(a) These establishments were included in the survey from March 2005 onwards.

ROOM NIGHTS OCCUPIED

Room nights occupied were 13.8 million in March quarter 2008 for hotels, motels and serviced apartments with 5 or more rooms. For hotels, motels and serviced apartments with 15 or more rooms, room nights occupied were 13.0 million in March quarter 2008, while for establishments with 5 to 14 rooms, room nights occupied were 0.8 million.

New South Wales contributed the highest proportion (32.1%) of occupied rooms for hotels, motels and serviced apartments with 15 or more rooms, followed by Queensland at 25.9%.

SUMMARY OF FINDINGS *continued*

Hotels, motels and serviced apartments continued

AVERAGE LENGTH OF STAY

The average length of stay in March quarter 2008 for hotels, motels and serviced apartments with both 5 or more rooms and 15 or more rooms was 2.3 days. For establishments with 5 to 14 rooms, the average length of stay was 1.8 days.

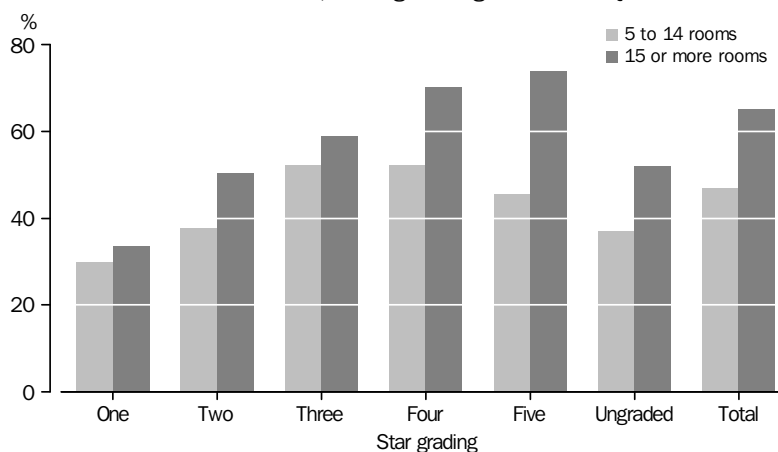
Queensland (2.7 days) reported the longest average length of stay for hotels, motels and serviced apartments with 15 or more rooms, followed by Western Australia (2.6 days). The shortest average length of stay was in Tasmania and the Northern Territory (both 1.9 days).

STAR GRADING

In March quarter 2008, the room occupancy rate for five-star hotels, motels and serviced apartments with 5 or more rooms was 73.8% compared with 32.4% for one-star. For hotels, motels and serviced apartments with 15 or more rooms, the room occupancy rate was 74.0% for five-star establishments compared with 33.8% for one-star establishments.

In the 5-14 rooms category, three-star (52.3%) and four-star (52.3%) establishments had the highest room occupancy rates in March quarter 2008, compared with one-star establishments at 29.8%.

ROOM OCCUPANCY RATE, Stargrading - March Qtr 2008



In March quarter 2008, the average takings per room night occupied for five-star hotels, motels and serviced apartments with 5 or more rooms was \$258.45 compared with \$67.64 for one-star. In the 15 or more rooms category, the average takings was \$258.45 for five-star establishments compared with \$72.55 for one-star establishments.

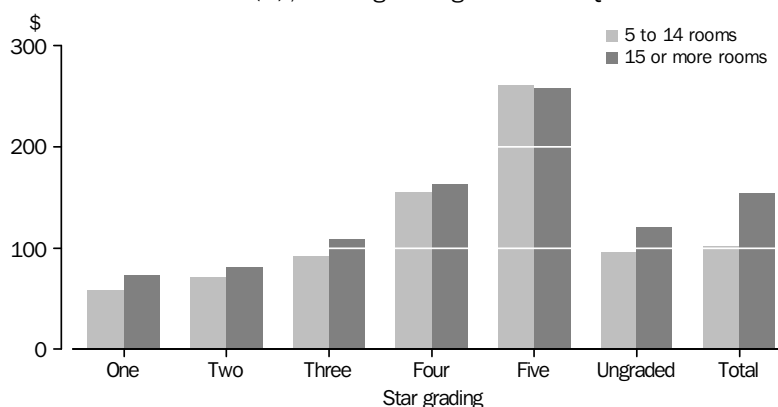
For establishments with 5 to 14 rooms, five-star establishments had the highest average takings per room nights occupied of \$260.63, compared with one-star establishments at \$57.69.

SUMMARY OF FINDINGS *continued*

Hotels, motels and serviced apartments continued

STAR GRADING *continued*

AVERAGE TAKINGS (a), Star grading - March Qtr 2008



(a) Per room night occupied

Caravan parks, holiday flats, units and houses, and visitor hostels

ACCOMMODATION TAKINGS

In March quarter 2008, accommodation takings for caravan parks were \$279.0 million. New South Wales (\$104.6 million) had the highest accommodation takings for all caravan parks for March quarter 2008, contributing 37.5% of the total.

Short-term caravan park takings were \$234.7 million in March quarter 2008 which was 84.1% of total caravan park takings.

Accommodation takings for holiday flats, units and houses were \$176.7 million in March quarter 2008. Real estate takings accounted for 31.1% of total holiday flats, units and houses takings, the rest being for other letting entities.

For visitor hostels, accommodation takings were \$62.5 million in March quarter 2008.

OCCUPANCY RATE

The site occupancy rate for all caravan parks in March quarter 2008 was 54.7%.

Short-term caravan park occupancy was 51.3% and long-term caravan park occupancy was 78.2%.

For holiday flats, units and houses, the unit occupancy rate was 51.8% in March quarter 2008.

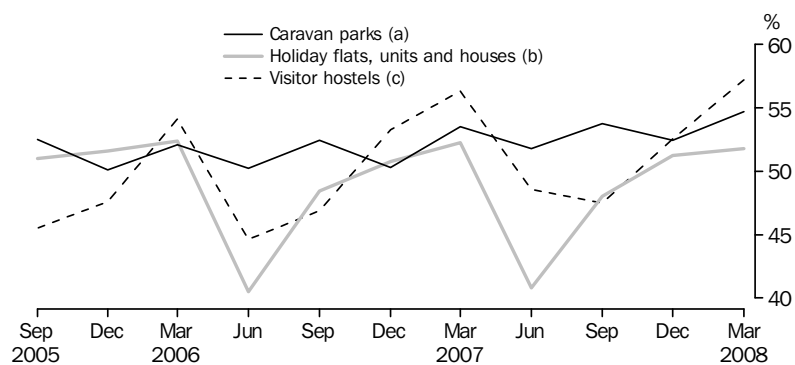
The bed occupancy rate for visitor hostels in March quarter 2008 was 57.2%. New South Wales, Western Australia and Victoria had the highest bed occupancy rates for visitor hostels in March quarter 2008 being 67.3%, 65.6% and 60.7% respectively.

SUMMARY OF FINDINGS *continued*

Caravan parks, holiday
flats, units and houses,
and visitor hostels
continued

OCCUPANCY RATE *continued*

OCCUPANCY RATES, Australia



(a) Site occupancy rate.
(b) Unit occupancy rate.
(c) Bed occupancy rate.

Period	ORIGINAL		SEASONALLY ADJUSTED		TREND	
	Takings from accommodation	Room occupancy rate	Takings from accommodation	Room occupancy rate	Takings from accommodation	Room occupancy rate
	\$m	%	\$m	%	\$m	%
2004						
September Quarter	1 485.7	64.2	1 437.5	62.6	1 428.6	62.2
December Quarter	1 513.0	63.7	1 445.0	62.2	1 459.0	62.7
2005						
March Quarter	1 525.3	63.6	1 501.1	63.2	1 497.5	63.0
June Quarter	1 395.0	59.7	1 540.8	63.3	1 534.6	63.1
September Quarter	1 618.2	64.4	1 567.4	62.9	1 563.3	63.1
December Quarter	1 650.9	64.5	1 579.3	62.9	1 591.7	63.3
2006						
March Quarter	1 649.2	64.2	1 626.7	63.8	1 623.4	63.7
June Quarter	1 526.5	60.9	1 678.6	64.4	1 664.7	64.0
September Quarter	1 740.5	65.3	1 684.4	63.8	1 715.3	64.5
December Quarter	1 866.6	66.9	1 790.2	65.3	1 764.2	65.2
2007						
March Quarter	1 832.3	66.6	1 807.9	66.2	1 807.5	65.7
June Quarter	1 667.1	61.9	1 829.8	65.4	1 843.0	65.9
September Quarter	1 942.6	67.1	1 884.3	65.7	1 878.1	65.5
December Quarter	2 000.6	66.8	1 918.9	65.2	1 920.6	65.2
2008						
March Quarter	1 999.8	65.2	1 962.5	64.7	1 960.4	64.8

Period	ORIGINAL		SEASONALLY ADJUSTED		TREND	
	Takings change from prev. qtr	Room occupancy change from prev. qtr	Takings change from prev. qtr	Room occupancy change from prev. qtr	Takings change from prev. qtr	Room occupancy change from prev. qtr
	%	pts	%	pts	%	pts
2004						
September Quarter	16.3	5.8	2.3	0.8	1.5	0.3
December Quarter	1.8	-0.5	0.5	-0.4	2.1	0.5
2005						
March Quarter	0.8	-0.2	3.9	1.0	2.6	0.3
June Quarter	-8.5	-3.8	2.6	0.1	2.5	0.1
September Quarter	16.0	4.7	1.7	-0.4	1.9	—
December Quarter	2.0	0.1	0.8	—	1.8	0.2
2006						
March Quarter	-0.1	-0.3	3.0	0.9	2.0	0.4
June Quarter	-7.4	-3.3	3.2	0.6	2.5	0.3
September Quarter	14.0	4.4	0.3	-0.6	3.0	0.5
December Quarter	7.2	1.6	6.3	1.5	2.9	0.7
2007						
March Quarter	-1.8	-0.3	1.0	0.9	2.5	0.5
June Quarter	-9.0	-4.7	1.2	-0.8	2.0	0.2
September Quarter	16.5	5.2	3.0	0.3	1.9	-0.4
December Quarter	3.0	-0.4	1.8	-0.5	2.3	-0.3
2008						
March Quarter	—	-1.6	2.3	-0.5	2.1	-0.4

— nil or rounded to zero (including null cells)

SUMMARY OF HOTELS, MOTELS AND SERVICED APARTMENTS, Australia

<i>Period</i>	<i>Establishments</i> no.	<i>Rooms</i> no.	<i>Bed spaces</i> no.	<i>Persons employed</i> no.	<i>Room nights occupied</i> '000	<i>Room occupancy rate</i> %
HOTELS MOTELS AND SERVICED APARTMENTS WITH 5 TO 14 ROOMS						
2007						
March Quarter	1 919	18 441	54 121	11 542	785.1	47.9
June Quarter	1 918	18 464	54 171	11 604	739.0	44.3
September Quarter	1 921	18 475	54 293	11 756	768.3	45.4
December Quarter	1 925	18 470	54 344	11 812	787.6	46.6
2008						
March Quarter	1 931	18 570	54 506	11 750	788.3	46.9
Year ended March 2007	3 075.3	45.7
Year ended March 2008	3 083.2	45.8
HOTELS MOTELS AND SERVICED APARTMENTS WITH 15 OR MORE ROOMS						
2007						
March Quarter	4 205	215 763	619 187	115 703	12 833.8	66.6
June Quarter	4 206	216 007	618 733	115 340	12 128.2	61.9
September Quarter	4 220	216 845	620 769	115 439	13 380.7	67.1
December Quarter	4 235	218 317	624 751	116 237	13 359.4	66.8
2008						
March Quarter	4 250	220 303	627 952	116 165	12 981.2	65.2
Year ended March 2007	50 573.3	65.0
Year ended March 2008	51 849.5	65.3
HOTELS MOTELS AND SERVICED APARTMENTS WITH 5 OR MORE ROOMS						
2007						
March Quarter	6 124	234 204	673 308	127 245	13 618.9	65.1
June Quarter	6 124	234 471	672 904	126 944	12 867.2	60.6
September Quarter	6 141	235 320	675 062	127 195	14 149.1	65.4
December Quarter	6 160	236 787	679 095	128 049	14 147.0	65.2
2008						
March Quarter	6 181	238 873	682 458	127 915	13 769.5	63.8
Year ended March 2007	53 648.7	63.4
Year ended March 2008	54 932.8	63.7
.. not applicable						

<i>Period</i>	<i>Guest nights occupied</i>	<i>Bed occupancy rate</i>	<i>Guest arrivals</i>	<i>Average length of stay</i>	<i>Takings from accommodation</i>
	'000	%	'000	days	\$'000

HOTELS MOTELS AND SERVICED APARTMENTS WITH 5 TO 14 ROOMS

2007

March Quarter	1 492.1	31.1	811.0	1.8	75 437
June Quarter	1 337.5	27.3	750.8	1.8	67 716
September Quarter	1 403.4	28.2	786.7	1.8	73 442
December Quarter	1 461.6	29.4	817.3	1.8	77 467

2008

March Quarter	1 502.0	30.4	819.2	1.8	80 407
---------------	---------	------	-------	-----	--------

Year ended March 2007	5 719.7	28.9	3 165.2	1.8	283 078
------------------------------	----------------	-------------	----------------	------------	----------------

Year ended March 2008	5 704.5	28.8	3 174.0	1.8	299 032
------------------------------	----------------	-------------	----------------	------------	----------------

HOTELS MOTELS AND SERVICED APARTMENTS WITH 15 OR MORE ROOMS

2007

March Quarter	22 898.5	41.5	9 842.1	2.3	1 832 321
June Quarter	20 910.5	37.3	9 482.9	2.2	1 667 135
September Quarter	23 372.8	41.0	10 483.5	2.2	1 942 581
December Quarter	23 620.1	41.2	10 755.3	2.2	2 000 634

2008

March Quarter	23 178.2	40.9	9 957.0	2.3	1 999 773
---------------	----------	------	---------	-----	-----------

Year ended March 2007	89 295.2	40.0	39 426.9	2.3	6 965 938
------------------------------	-----------------	-------------	-----------------	------------	------------------

Year ended March 2008	91 081.7	40.1	40 678.6	2.2	7 610 124
------------------------------	-----------------	-------------	-----------------	------------	------------------

HOTELS MOTELS AND SERVICED APARTMENTS WITH 5 OR MORE ROOMS

2007

March Quarter	24 390.7	40.6	10 653.2	2.3	1 907 758
June Quarter	22 248.0	36.5	10 233.7	2.2	1 734 851
September Quarter	24 776.2	39.9	11 270.2	2.2	2 016 023
December Quarter	25 081.8	40.3	11 572.5	2.2	2 078 102

2008

March Quarter	24 680.2	40.1	10 776.2	2.3	2 080 180
---------------	----------	------	----------	-----	-----------

Year ended March 2007	95 014.9	39.1	42 592.1	2.2	7 249 016
------------------------------	-----------------	-------------	-----------------	------------	------------------

Year ended March 2008	96 786.2	39.2	43 852.6	2.2	7 909 156
------------------------------	-----------------	-------------	-----------------	------------	------------------

SUMMARY OF LICENSED HOTELS AND RESORTS, Australia

<i>Period</i>	<i>Establishments</i> no.	<i>Rooms</i> no.	<i>Bed spaces</i> no.	<i>Persons employed</i> no.	<i>Room nights occupied</i> '000	<i>Room occupancy rate</i> %
.....						
LICENSED HOTELS WITH 5 TO 14 ROOMS						
2007						
March Quarter	443	4 219	11 209	6 759	148.0	39.2
June Quarter	441	4 210	11 146	6 829	140.5	36.7
September Quarter	446	4 268	11 377	6 873	144.6	37.0
December Quarter	442	4 228	11 289	6 797	148.7	38.4
2008						
March Quarter	449	4 286	11 353	6 703	148.7	37.9
Year ended March 2007	579.5	37.5
Year ended March 2008	582.4	37.5
.....						
LICENSED HOTELS WITH 15 OR MORE ROOMS						
2007						
March Quarter	831	81 048	213 415	71 551	5 275.6	72.9
June Quarter	828	80 906	212 294	71 185	4 894.6	66.8
September Quarter	832	81 334	213 573	70 778	5 402.7	72.2
December Quarter	833	81 372	213 005	71 253	5 381.7	72.2
2008						
March Quarter	833	81 619	212 148	70 746	5 211.2	70.7
Year ended March 2007	20 634.0	70.6
Year ended March 2008	20 890.2	70.5
.....						
LICENSED HOTELS WITH 5 OR MORE ROOMS						
2007						
March Quarter	1 274	85 267	224 624	78 310	5 423.6	71.3
June Quarter	1 269	85 116	223 440	78 014	5 035.1	65.3
September Quarter	1 278	85 602	224 950	77 651	5 547.3	70.5
December Quarter	1 275	85 600	224 294	78 050	5 530.4	70.6
2008						
March Quarter	1 282	85 905	223 501	77 449	5 359.8	69.1
Year ended March 2007	21 213.5	68.9
Year ended March 2008	21 472.6	68.9
.....						
..	not applicable					

SUMMARY OF LICENSED HOTELS AND RESORTS, Australia *continued*

<i>Period</i>	<i>Guest nights occupied</i> '000	<i>Bed occupancy rate</i> %	<i>Guest arrivals</i> '000	<i>Average length of stay</i> days	<i>Takings from accommodation</i> \$'000
---------------	--	--	-----------------------------------	---	---

LICENSED HOTELS WITH 5 TO 14 ROOMS

2007

March Quarter	233.7	23.3	134.4	1.7	10 638
June Quarter	212.1	20.9	119.3	1.8	9 649
September Quarter	217.4	20.9	128.1	1.7	10 401
December Quarter	228.8	22.1	133.3	1.7	11 108

2008

March Quarter	230.7	22.2	133.4	1.7	11 227
---------------	-------	------	-------	-----	--------

Year ended March 2007	900.9	21.7	524.2	1.7	39 850
------------------------------	--------------	-------------	--------------	------------	---------------

Year ended March 2008	889.0	21.5	514.1	1.7	42 385
------------------------------	--------------	-------------	--------------	------------	---------------

LICENSED HOTELS WITH 15 OR MORE ROOMS

2007

March Quarter	8 581.4	45.1	3 707.5	2.3	902 567
June Quarter	7 717.7	40.2	3 593.4	2.1	795 784
September Quarter	8 662.6	44.1	3 962.9	2.2	926 677
December Quarter	8 667.1	44.4	4 042.7	2.1	969 613

2008

March Quarter	8 449.8	44.3	3 695.7	2.3	969 473
---------------	---------	------	---------	-----	---------

Year ended March 2007	33 265.7	43.4	14 912.3	2.2	3 398 760
------------------------------	-----------------	-------------	-----------------	------------	------------------

Year ended March 2008	33 497.3	43.2	15 294.8	2.2	3 661 547
------------------------------	-----------------	-------------	-----------------	------------	------------------

LICENSED HOTELS WITH 5 OR MORE ROOMS

2007

March Quarter	8 815.1	44.0	3 841.9	2.3	913 205
June Quarter	7 929.8	39.2	3 712.7	2.1	805 433
September Quarter	8 880.0	42.9	4 091.0	2.2	937 077
December Quarter	8 896.0	43.3	4 176.0	2.1	980 721

2008

March Quarter	8 680.6	43.1	3 829.2	2.3	980 700
---------------	---------	------	---------	-----	---------

Year ended March 2007	34 166.6	42.3	15 436.4	2.2	3 438 610
------------------------------	-----------------	-------------	-----------------	------------	------------------

Year ended March 2008	34 386.3	42.1	15 808.9	2.2	3 703 932
------------------------------	-----------------	-------------	-----------------	------------	------------------

SUMMARY OF MOTELS, PRIVATE HOTELS AND GUEST HOUSES, Australia

<i>Period</i>	<i>Establishments</i> no.	<i>Rooms</i> no.	<i>Bed spaces</i> no.	<i>Persons employed</i> no.	<i>Room nights occupied</i> '000	<i>Room occupancy rate</i> %
MOTELS AND GUEST HOUSES WITH 5 TO 14 ROOMS						
2007						
March Quarter	1 140	11 295	31 782	3 756	484.3	48.5
June Quarter	1 139	11 304	31 841	3 711	462.0	45.3
September Quarter	1 138	11 291	31 794	3 801	478.3	46.2
December Quarter	1 144	11 319	31 869	3 910	487.0	47.1
2008						
March Quarter	1 134	11 255	31 467	3 857	483.9	47.7
Year ended March 2007	1 916.5	46.4
Year ended March 2008	1 911.1	46.6
MOTELS AND GUEST HOUSES WITH 15 OR MORE ROOMS						
2007						
March Quarter	2 481	86 910	249 928	29 338	4 542.0	58.6
June Quarter	2 476	86 944	249 858	29 404	4 431.4	56.3
September Quarter	2 480	87 091	250 487	29 921	4 808.1	60.1
December Quarter	2 484	87 683	251 945	29 860	4 761.0	59.2
2008						
March Quarter	2 479	87 562	250 523	29 914	4 583.0	58.0
Year ended March 2007	18 198.5	57.8
Year ended March 2008	18 583.5	58.4
MOTELS AND GUEST HOUSES WITH 5 OR MORE ROOMS						
2007						
March Quarter	3 621	98 205	281 710	33 094	5 026.3	57.5
June Quarter	3 615	98 248	281 699	33 115	4 893.4	55.0
September Quarter	3 618	98 382	282 281	33 722	5 286.3	58.5
December Quarter	3 628	99 002	283 814	33 770	5 248.0	57.9
2008						
March Quarter	3 613	98 817	281 990	33 771	5 067.0	56.8
Year ended March 2007	20 115.0	56.5
Year ended March 2008	20 494.7	57.1
..	not applicable					

SUMMARY OF MOTELS, PRIVATE HOTELS AND GUEST HOUSES, Australia *continued*

<i>Period</i>	<i>Guest nights occupied</i>	<i>Bed occupancy rate</i>	<i>Guest arrivals</i>	<i>Average length of stay</i>	<i>Takings from accommodation</i>
	'000	%	'000	days	\$'000

MOTELS AND GUEST HOUSES WITH 5 TO 14 ROOMS

2007

March Quarter	875.4	31.3	533.0	1.6	45 238
June Quarter	804.5	28.1	504.7	1.6	41 528
September Quarter	841.5	28.9	525.1	1.6	44 858
December Quarter	865.2	29.7	538.6	1.6	46 713

2008

March Quarter	876.7	30.9	541.3	1.6	48 121
---------------	-------	------	-------	-----	--------

Year ended March 2007	3 410.3	29.3	2 109.0	1.6	172 892
------------------------------	----------------	-------------	----------------	------------	----------------

Year ended March 2008	3 388.0	29.4	2 109.7	1.6	181 221
------------------------------	----------------	-------------	----------------	------------	----------------

MOTELS AND GUEST HOUSES WITH 15 OR MORE ROOMS

2007

March Quarter	7 836.1	35.2	4 264.7	1.8	482 021
June Quarter	7 439.2	32.9	4 096.5	1.8	462 327
September Quarter	8 157.0	35.4	4 519.4	1.8	527 771
December Quarter	8 125.1	35.2	4 587.3	1.8	530 408

2008

March Quarter	7 892.1	34.9	4 260.4	1.9	517 464
---------------	---------	------	---------	-----	---------

Year ended March 2007	31 266.5	34.4	17 169.7	1.8	1 877 613
------------------------------	-----------------	-------------	-----------------	------------	------------------

Year ended March 2008	31 613.5	34.6	17 463.6	1.8	2 037 971
------------------------------	-----------------	-------------	-----------------	------------	------------------

MOTELS AND GUEST HOUSES WITH 5 OR MORE ROOMS

2007

March Quarter	8 711.5	34.8	4 797.7	1.8	527 259
June Quarter	8 243.7	32.4	4 601.2	1.8	503 855
September Quarter	8 998.6	34.7	5 044.5	1.8	572 629
December Quarter	8 990.4	34.6	5 125.8	1.8	577 121

2008

March Quarter	8 768.8	34.5	4 801.8	1.8	565 585
---------------	---------	------	---------	-----	---------

Year ended March 2007	34 676.8	33.9	19 278.7	1.8	2 050 505
------------------------------	-----------------	-------------	-----------------	------------	------------------

Year ended March 2008	35 001.4	34.0	19 573.3	1.8	2 219 192
------------------------------	-----------------	-------------	-----------------	------------	------------------

SUMMARY OF SERVICED APARTMENTS, Australia

<i>Period</i>	<i>Establishments</i> no.	<i>Rooms</i> no.	<i>Bed spaces</i> no.	<i>Persons employed</i> no.	<i>Room nights occupied</i> '000	<i>Room occupancy rate</i> %
SERVICED APARTMENTS WITH 5 TO 14 ROOMS						
2007						
March Quarter	336	2 927	11 130	1 027	152.8	58.4
June Quarter	338	2 950	11 184	1 064	136.5	50.9
September Quarter	337	2 916	11 122	1 082	145.5	54.3
December Quarter	339	2 923	11 186	1 105	151.9	56.6
2008						
March Quarter	348	3 029	11 686	1 190	155.7	56.6
Year ended March 2007	579.3	55.2
Year ended March 2008	589.7	54.6
SERVICED APARTMENTS WITH 15 OR MORE ROOMS						
2007						
March Quarter	893	47 805	155 844	14 814	3 016.1	70.4
June Quarter	902	48 157	156 581	14 751	2 802.2	64.0
September Quarter	908	48 420	156 709	14 740	3 170.0	71.2
December Quarter	918	49 262	159 801	15 124	3 216.6	71.1
2008						
March Quarter	938	51 122	165 281	15 505	3 187.0	68.7
Year ended March 2007	11 740.8	68.3
Year ended March 2008	12 375.8	68.8
SERVICED APARTMENTS WITH 5 OR MORE ROOMS						
2007						
March Quarter	1 229	50 732	166 974	15 841	3 168.9	69.7
June Quarter	1 240	51 107	167 765	15 815	2 938.7	63.3
September Quarter	1 245	51 336	167 831	15 822	3 315.5	70.2
December Quarter	1 257	52 185	170 987	16 229	3 368.5	70.3
2008						
March Quarter	1 286	54 151	176 967	16 695	3 342.7	68.0
Year ended March 2007	12 320.2	67.6
Year ended March 2008	12 965.5	68.0
.. not applicable						

SUMMARY OF SERVICED APARTMENTS, Australia *continued*

<i>Period</i>	<i>Guest nights occupied</i>	<i>Bed occupancy rate</i>	<i>Guest arrivals</i>	<i>Average length of stay</i>	<i>Takings from accommodation</i>
	'000	%	'000	days	\$'000

SERVICED APARTMENTS WITH 5 TO 14 ROOMS

2007

March Quarter	383.1	38.5	143.7	2.7	19 561
June Quarter	320.9	31.5	126.9	2.5	16 539
September Quarter	344.5	33.7	133.5	2.6	18 183
December Quarter	367.6	35.8	145.4	2.5	19 646

2008

March Quarter	394.6	37.2	144.5	2.7	21 058
---------------	-------	------	-------	-----	--------

Year ended March 2007	1 408.5	35.4	532.0	2.6	70 335
------------------------------	----------------	-------------	--------------	------------	---------------

Year ended March 2008	1 427.6	34.6	550.3	2.6	75 426
------------------------------	----------------	-------------	--------------	------------	---------------

SERVICED APARTMENTS WITH 15 OR MORE ROOMS

2007

March Quarter	6 481.0	46.5	1 869.9	3.5	447 733
June Quarter	5 753.6	40.4	1 792.9	3.2	409 024
September Quarter	6 553.2	45.5	2 001.2	3.3	488 134
December Quarter	6 827.8	46.6	2 125.3	3.2	500 613

2008

March Quarter	6 836.3	45.6	2 000.8	3.4	512 836
---------------	---------	------	---------	-----	---------

Year ended March 2007	24 763.0	44.3	7 344.9	3.4	1 689 566
------------------------------	-----------------	-------------	----------------	------------	------------------

Year ended March 2008	25 970.9	44.6	7 920.2	3.3	1 910 607
------------------------------	-----------------	-------------	----------------	------------	------------------

SERVICED APARTMENTS WITH 5 OR MORE ROOMS

2007

March Quarter	6 864.1	45.9	2 013.6	3.4	467 294
June Quarter	6 074.5	39.9	1 919.8	3.2	425 563
September Quarter	6 897.6	44.7	2 134.7	3.2	506 316
December Quarter	7 195.4	45.9	2 270.7	3.2	520 259

2008

March Quarter	7 230.9	45.0	2 145.2	3.4	533 894
---------------	---------	------	---------	-----	---------

Year ended March 2007	26 171.5	43.7	7 876.9	3.3	1 759 900
------------------------------	-----------------	-------------	----------------	------------	------------------

Year ended March 2008	27 398.4	43.9	8 470.4	3.2	1 986 032
------------------------------	-----------------	-------------	----------------	------------	------------------

SUMMARY OF CARAVAN PARKS(a), Australia

CAPACITY

<i>Period</i>	<i>Establishments</i>	<i>On-site vans</i>	<i>Other powered sites</i>	<i>Unpowered sites</i>	<i>Cabins, flats units and villas</i>	<i>Total capacity</i>
	no.	no.	no.	no.	no.	no.
CARAVAN PARKS, SHORT TERM (b)						
2007						
March Quarter	1 457	13 123	126 445	38 895	26 038	204 501
June Quarter	1 459	13 843	125 372	38 475	26 108	203 798
September Quarter	1 459	13 250	125 290	38 749	26 428	203 717
December Quarter	1 456	13 264	126 223	38 884	26 299	204 670
2008						
March Quarter	1 449	13 647	125 263	38 703	26 812	204 425
Year ended March 2007
Year ended March 2008

CARAVAN PARKS, LONG TERM (b)

2007						
March Quarter	232	4 032	17 754	2 037	6 264	30 087
June Quarter	230	4 094	17 529	2 028	6 432	30 083
September Quarter	230	4 019	17 240	1 959	6 661	29 879
December Quarter	227	4 053	17 049	1 921	6 608	29 631
2008						
March Quarter	224	4 285	16 540	1 967	6 606	29 398
Year ended March 2007
Year ended March 2008

CARAVAN PARKS, TOTAL

2007						
March Quarter	1 689	17 155	144 199	40 932	32 302	234 588
June Quarter	1 689	17 937	142 901	40 503	32 540	233 881
September Quarter	1 689	17 269	142 530	40 708	33 089	233 596
December Quarter	1 683	17 317	143 272	40 805	32 907	234 301
2008						
March Quarter	1 673	17 932	141 803	40 670	33 418	233 823
Year ended March 2007
Year ended March 2008

.. not applicable

(a) Comprising establishments with 40 or more powered sites and cabins, flats, units and villas

(b) For definitions of short-term and long-term caravan parks, see Glossary.

SUMMARY OF CARAVAN PARKS(a), Australia *continued*

<i>Period</i>	<i>Persons employed</i>	<i>Sites occupied by long-term guests</i>	<i>Other sites permanently reserved</i>	<i>Site nights occupied</i>	<i>Site occupancy rate</i>	<i>Takings from accommodation</i>
	no.	no.	no.	'000	%	\$'000
CARAVAN PARKS, SHORT TERM (b)						
2007						
March Quarter	8 793	18 346	40 149	9 158.4	50.0	204 863
June Quarter	8 639	18 497	39 592	8 923.0	48.4	184 584
September Quarter	8 720	18 924	40 069	9 332.2	50.4	198 294
December Quarter	9 093	18 570	39 122	9 122.4	48.8	213 778
2008						
March Quarter	9 051	18 382	40 152	9 535.8	51.3	234 706
Year ended March 2007	35 770.0	48.1	746 401
Year ended March 2008	36 913.5	49.7	831 362
CARAVAN PARKS, LONG TERM (b)						
2007						
March Quarter	1 297	16 896	1 770	2 089.8	77.2	39 148
June Quarter	1 286	16 935	1 874	2 049.2	74.9	38 661
September Quarter	1 319	16 911	1 787	2 100.6	76.4	41 655
December Quarter	1 360	16 899	1 692	2 111.6	77.5	44 525
2008						
March Quarter	1 335	16 403	1 681	2 091.3	78.2	44 316
Year ended March 2007	8 312.9	75.3	152 474
Year ended March 2008	8 352.7	76.7	169 156
CARAVAN PARKS, TOTAL						
2007						
March Quarter	10 090	35 242	41 919	11 248.2	53.5	244 010
June Quarter	9 925	35 432	41 466	10 972.2	51.8	223 245
September Quarter	10 039	35 835	41 856	11 432.8	53.8	239 949
December Quarter	10 453	35 469	40 814	11 234.1	52.4	258 303
2008						
March Quarter	10 386	34 785	41 833	11 627.1	54.7	279 021
Year ended March 2007	44 082.9	51.6	898 875
Year ended March 2008	45 266.2	53.2	1 000 518

.. not applicable

(a) Comprising establishments with 40 or more powered sites and cabins, flats, units and villas

(b) For definitions of short-term and long-term caravan parks, see Glossary.

SUMMARY OF HOLIDAY FLATS, UNITS AND HOUSES, Australia

Period	CAPACITY					
	Letting entities(a)	Single bedroom	Multiple bedroom	Total	Bed spaces	Persons employed(b)
	no.	no.	no.	no.	no.	no.
REAL ESTATE AGENTS						
2007						
March Quarter	158	637	13 106	13 743	77 033	..
June Quarter	156	617	12 913	13 530	76 027	..
September Quarter	155	605	12 955	13 560	76 631	..
December Quarter	155	611	13 029	13 640	76 547	..
2008						
March Quarter	155	653	13 070	13 723	76 903	..
Year ended March 2007
Year ended March 2008
OTHER LETTING ENTITIES						
2007						
March Quarter	421	4 241	10 562	14 803	59 971	2 473
June Quarter	425	4 386	10 530	14 916	60 127	2 534
September Quarter	428	4 378	10 631	15 009	61 331	2 527
December Quarter	431	4 351	10 798	15 149	62 265	2 542
2008						
March Quarter	428	4 312	10 863	15 175	62 556	2 450
Year ended March 2007
Year ended March 2008
HOLIDAY FLATS AND UNITS						
2007						
March Quarter	579	4 878	23 668	28 546	137 004	..
June Quarter	581	5 003	23 443	28 446	136 154	..
September Quarter	583	4 983	23 586	28 569	137 962	..
December Quarter	586	4 962	23 827	28 789	138 812	..
2008						
March Quarter	583	4 965	23 933	28 898	139 459	..
Year ended March 2007
Year ended March 2008
.. not applicable						
(a) The number of owners, managers or real estate agents with 15 or more self-contained units						
(b) Employment numbers exclude real estate agents and their employees						

<i>Period</i>	<i>Unit nights occupied</i> '000	<i>Unit occupancy rate</i> %	<i>Unit lettings</i> '000	<i>Average length of stay</i> days	<i>Takings from accommodation</i> \$'000
REAL ESTATE AGENTS					
2007					
March Quarter	449.1	36.4	77.6	5.8	50 314
June Quarter	285.9	23.4	55.3	5.2	26 113
September Quarter	328.7	26.4	59.4	5.5	33 643
December Quarter	411.7	32.9	84.4	4.9	46 909
2008					
March Quarter	466.0	37.4	83.6	5.6	54 909
Year ended March 2007	1 509.1	30.3	285.9	5.3	151 535
Year ended March 2008	1 492.4	30.0	282.6	5.3	161 575
OTHER LETTING ENTITIES					
2007					
March Quarter	888.1	67.0	301.1	2.9	110 895
June Quarter	765.7	56.5	275.0	2.8	87 828
September Quarter	931.8	67.6	312.7	3.0	116 381
December Quarter	942.5	67.7	352.7	2.7	129 565
2008					
March Quarter	894.1	64.8	320.8	2.8	121 825
Year ended March 2007	3 422.4	64.5	1 183.9	2.9	416 033
Year ended March 2008	3 534.1	64.2	1 261.3	2.8	455 598
HOLIDAY FLATS AND UNITS					
2007					
March Quarter	1 337.2	52.2	378.7	3.5	161 209
June Quarter	1 051.7	40.8	330.3	3.2	113 941
September Quarter	1 260.5	48.0	372.1	3.4	150 025
December Quarter	1 354.1	51.2	437.1	3.1	176 474
2008					
March Quarter	1 360.2	51.8	404.4	3.4	176 734
Year ended March 2007	4 931.5	48.0	1 469.9	3.4	567 568
Year ended March 2008	5 026.5	48.0	1 543.9	3.3	617 173

SUMMARY OF VISITOR HOSTELS(a), Australia

<i>Period</i>	<i>Establishments</i>	<i>Bed spaces</i>	<i>Persons employed</i>	<i>Guest arrivals</i>	<i>Guest nights occupied</i>	<i>Bed occupancy rate</i>	<i>Average length of stay</i>	<i>Takings from accommodation</i>
	no.	no.	no.	no.	no.	%	days	\$'000
2007								
March Quarter	427	46 770	3 231	850 417	2 351 032	56.3	2.8	57 361
June Quarter	426	46 999	3 272	733 738	2 069 230	48.5	2.8	51 049
September Quarter	426	47 157	3 354	705 183	2 048 267	47.5	2.9	51 274
December Quarter	424	47 149	3 449	747 728	2 264 705	52.5	3.0	58 703
2008								
March Quarter	415	46 386	3 391	824 970	2 399 726	57.2	2.9	62 546
Year ended March 2007	3 062 023	8 565 702	50.2	2.8	207 404
Year ended March 2008	3 011 619	8 781 928	51.4	2.9	223 571

. . not applicable

(a) Comprising establishments with 25 or more bed spaces.

STAR GRADING

Period	1	2	3	4	5	Ungraded	Total
--------	---	---	---	---	---	----------	-------

ESTABLISHMENTS, CAPACITY AND EMPLOYMENT (no.)

March Quarter 2007

Establishments	76	299	858	375	17	294	1 919
Rooms	719	2 910	8 864	3 102	136	2 710	18 441
Bed spaces	1 850	8 368	26 326	9 374	331	7 872	54 121
Persons employed	870	2 535	3 815	1 362	75	2 885	11 542

March Quarter 2008

Establishments	80	295	865	382	21	288	1 931
Rooms	770	2 866	8 939	3 161	171	2 663	18 570
Bed spaces	1 884	8 275	26 580	9 697	385	7 685	54 506
Persons employed	970	2 431	3 806	1 513	200	2 830	11 750

ROOM NIGHTS OCCUPIED ('000)

2007

March Quarter	20.2	103.8	415.1	151.0	5.6	89.4	785.1
---------------	------	-------	-------	-------	-----	------	-------

2008

January	7.3	33.2	146.6	53.8	2.5	29.9	273.3
February	6.5	31.0	127.4	44.8	2.1	27.1	238.9
March	7.1	35.1	149.3	51.5	2.5	30.7	276.0
March Quarter	20.9	99.3	423.3	150.1	7.1	87.6	788.3

ROOM OCCUPANCY RATE (%)

2007

March Quarter	31.5	39.8	52.6	53.9	45.9	38.6	47.9
---------------	------	------	------	------	------	------	------

2008

January	30.6	37.3	53.2	54.9	47.9	36.9	47.7
February	29.3	37.0	49.5	49.1	42.6	36.0	44.7
March	29.6	38.9	54.1	52.6	46.4	38.0	48.1
March Quarter	29.8	37.8	52.3	52.3	45.7	37.0	46.9

GUEST NIGHTS OCCUPIED ('000)

2007

March Quarter	31.3	179.5	776.7	335.0	11.1	158.5	1 492.1
---------------	------	-------	-------	-------	------	-------	---------

2008

January	11.6	60.1	298.0	130.9	4.8	57.6	563.1
February	9.2	50.4	223.7	92.9	4.0	44.4	424.6
March	10.2	59.3	274.7	111.9	4.4	53.8	514.3
March Quarter	31.1	169.8	796.4	335.7	13.3	155.8	1 502.0

BED OCCUPANCY RATE (%)

2007

March Quarter	19.0	23.9	33.2	39.6	37.3	23.8	31.1
---------------	------	------	------	------	------	------	------

2008

January	19.9	23.4	36.3	43.6	40.5	24.7	33.5
February	17.0	20.9	29.2	33.2	35.9	20.5	27.1
March	17.5	22.8	33.5	37.3	37.3	23.1	30.6
March Quarter	18.2	22.4	33.1	38.1	37.9	22.8	30.4

	STAR GRADING						
Period	1	2	3	4	5	Ungraded	Total
GUEST ARRIVALS ('000)							
2007							
March Quarter	19.5	105.7	445.6	154.8	5.8	79.6	811.0
2008							
January	7.2	35.7	164.2	54.6	2.4	28.3	292.4
February	6.0	30.0	133.0	45.5	2.1	24.0	240.5
March	7.0	35.2	161.1	52.7	2.2	28.1	286.4
March Quarter	20.1	100.9	458.3	152.7	6.7	80.4	819.2
AVERAGE LENGTH OF STAY (days)							
2007							
March Quarter	1.6	1.7	1.7	2.2	1.9	2.0	1.8
2008							
January	1.6	1.7	1.8	2.4	2.0	2.0	1.9
February	1.6	1.7	1.7	2.0	1.9	1.8	1.8
March	1.5	1.7	1.7	2.1	2.0	1.9	1.8
March Quarter	1.5	1.7	1.7	2.2	2.0	1.9	1.8
TAKINGS FROM ACCOMMODATION (\$'000)							
2007							
March Quarter	1 076	7 041	35 761	22 365	1 433	7 760	75 437
2008							
January	429	2 395	13 967	8 909	694	3 077	29 470
February	365	2 169	11 248	6 660	545	2 480	23 467
March	411	2 409	13 436	7 736	613	2 864	27 469
March Quarter	1 204	6 973	38 650	23 306	1 853	8 421	80 407
AVERAGE TAKINGS PER ROOM NIGHT OCCUPIED (\$)							
2007							
March Quarter	53.19	67.83	86.16	148.11	254.87	86.85	96.09
2008							
January	58.80	72.12	95.25	165.59	273.49	103.00	107.81
February	56.02	69.93	88.29	148.67	258.30	91.60	98.23
March	58.08	68.71	90.00	150.27	249.37	93.35	99.51
March Quarter	57.69	70.23	91.30	155.28	260.63	96.10	102.00
AVERAGE TAKINGS PER ROOM NIGHT AVAILABLE (\$)							
2007							
March Quarter	16.78	27.03	45.36	79.78	117.07	33.49	46.07
2008							
January	17.98	26.93	50.64	90.99	130.94	38.00	51.45
February	16.42	25.90	43.70	73.07	110.13	32.96	43.89
March	17.20	26.72	48.66	79.03	115.72	35.49	47.85
March Quarter	17.22	26.53	47.76	81.22	119.13	35.54	47.82

STAR GRADING

Period	1	2	3	4	5	Ungraded	Total
--------	---	---	---	---	---	----------	-------

ESTABLISHMENTS, CAPACITY AND EMPLOYMENT (no.)

March Quarter 2007

Establishments	55	297	2 071	1 459	106	217	4 205
Rooms	1 724	9 306	76 329	98 960	22 795	6 649	215 763
Bed spaces	5 737	26 503	224 268	287 077	56 829	18 773	619 187
Persons employed	664	3 605	27 015	48 577	32 695	3 147	115 703

March Quarter 2008

Establishments	48	282	2 122	1 468	119	211	4 250
Rooms	1 449	8 842	76 533	102 613	24 290	6 576	220 303
Bed spaces	4 852	25 240	223 025	295 548	60 945	18 342	627 952
Persons employed	540	3 381	25 600	50 534	33 005	3 105	116 165

ROOM NIGHTS OCCUPIED ('000)

2007

March Quarter	46.9	426.0	4 022.4	6 424.9	1 627.6	286.0	12 833.8
---------------	------	-------	---------	---------	---------	-------	----------

2008

January	13.9	132.3	1 330.1	2 160.5	517.5	98.7	4 253.0
February	13.5	125.4	1 298.4	2 140.1	557.2	97.2	4 231.7
March	15.0	141.0	1 431.7	2 240.4	561.8	106.7	4 496.5
March Quarter	42.3	398.8	4 060.1	6 541.0	1 636.5	302.5	12 981.2

ROOM OCCUPANCY RATE (%)

2007

March Quarter	31.4	51.8	59.1	72.3	79.7	50.8	66.6
---------------	------	------	------	------	------	------	------

2008

January	32.5	49.2	56.5	68.1	68.7	49.9	62.6
February	33.9	49.9	59.3	72.2	79.1	52.8	66.8
March	34.9	52.0	61.0	70.5	74.6	53.6	66.2
March Quarter	33.8	50.4	58.9	70.2	74.0	52.1	65.2

GUEST NIGHTS OCCUPIED ('000)

2007

March Quarter	85.1	744.1	7 301.4	11 689.8	2 598.9	479.3	22 898.5
---------------	------	-------	---------	----------	---------	-------	----------

2008

January	26.8	234.8	2 624.8	4 376.0	892.9	170.6	8 325.9
February	23.6	206.6	2 208.8	3 603.6	839.5	146.2	7 028.3
March	26.3	240.5	2 533.3	3 977.2	882.3	164.3	7 824.0
March Quarter	76.7	682.0	7 366.9	11 956.8	2 614.7	481.2	23 178.2

BED OCCUPANCY RATE (%)

2007

March Quarter	17.5	32.1	36.5	45.4	51.0	30.5	41.5
---------------	------	------	------	------	------	------	------

2008

January	19.1	30.9	38.3	47.9	47.3	31.4	43.1
February	18.1	29.0	34.7	42.2	47.5	28.9	39.0
March	18.7	31.2	37.2	43.5	46.7	30.0	40.5
March Quarter	18.7	30.4	36.8	44.6	47.1	30.1	40.9

	STAR GRADING						
Period	1	2	3	4	5	Ungraded	Total
GUEST ARRIVALS ('000)							
2007							
March Quarter	52.2	432.0	3 529.2	4 588.9	1 042.0	197.9	9 842.1
2008							
January	16.3	136.3	1 223.8	1 579.6	322.3	65.1	3 343.5
February	13.9	117.6	1 098.8	1 519.7	351.4	62.1	3 163.4
March	15.4	138.6	1 235.9	1 633.4	358.4	68.4	3 450.0
March Quarter	45.6	392.5	3 558.5	4 732.7	1 032.1	195.6	9 957.0
AVERAGE LENGTH OF STAY (days)							
2007							
March Quarter	1.6	1.7	2.1	2.5	2.5	2.4	2.3
2008							
January	1.6	1.7	2.1	2.8	2.8	2.6	2.5
February	1.7	1.8	2.0	2.4	2.4	2.4	2.2
March	1.7	1.7	2.0	2.4	2.5	2.4	2.3
March Quarter	1.7	1.7	2.1	2.5	2.5	2.5	2.3
TAKINGS FROM ACCOMMODATION (\$'000)							
2007							
March Quarter	3 742	31 586	415 985	964 987	383 767	32 253	1 832 321
2008							
January	986	10 825	148 868	354 944	133 109	12 016	660 747
February	1 011	10 063	138 224	346 178	143 972	11 747	651 194
March	1 075	11 383	153 463	363 314	145 863	12 733	687 831
March Quarter	3 072	32 271	440 555	1 064 435	422 944	36 496	1 999 773
AVERAGE TAKINGS PER ROOM NIGHT OCCUPIED (\$)							
2007							
March Quarter	79.81	74.14	103.42	150.19	235.78	112.78	142.77
2008							
January	70.86	81.80	111.93	164.29	257.20	121.77	155.36
February	75.04	80.24	106.46	161.76	258.40	120.91	153.89
March	71.89	80.71	107.19	162.17	259.64	119.34	152.97
March Quarter	72.55	80.92	108.51	162.73	258.45	120.64	154.05
AVERAGE TAKINGS PER ROOM NIGHT AVAILABLE (\$)							
2007							
March Quarter	25.09	38.41	61.16	108.56	187.98	57.31	95.10
2008							
January	23.02	40.22	63.25	111.85	176.77	60.77	97.32
February	25.41	40.03	63.10	116.71	204.43	63.81	102.77
March	25.12	41.97	65.44	114.36	193.71	63.97	101.33
March Quarter	24.50	40.76	63.95	114.25	191.36	62.83	100.42

STAR GRADING

Period	1	2	3	4	5	Ungraded	Total
--------	---	---	---	---	---	----------	-------

ESTABLISHMENTS, CAPACITY AND EMPLOYMENT (no.)

March Quarter 2007

Establishments	131	596	2 929	1 834	123	511	6 124
Rooms	2 443	12 216	85 193	102 062	22 931	9 359	234 204
Bed spaces	7 587	34 871	250 594	296 451	57 160	26 645	673 308
Persons employed	1 534	6 140	30 830	49 939	32 770	6 032	127 245

March Quarter 2008

Establishments	128	577	2 987	1 850	140	499	6 181
Rooms	2 219	11 708	85 472	105 774	24 461	9 239	238 873
Bed spaces	6 736	33 515	249 605	305 245	61 330	26 027	682 458
Persons employed	1 510	5 812	29 406	52 047	33 205	5 935	127 915

ROOM NIGHTS OCCUPIED ('000)

2007

March Quarter	67.1	529.8	4 437.4	6 575.9	1 633.3	375.3	13 618.9
---------------	------	-------	---------	---------	---------	-------	----------

2008

January	21.2	165.5	1 476.7	2 214.3	520.1	128.5	4 526.4
February	20.0	156.4	1 425.8	2 184.9	559.3	124.2	4 470.6
March	22.0	176.1	1 581.0	2 291.8	564.2	137.4	4 772.5
March Quarter	63.2	498.1	4 483.4	6 691.1	1 643.6	390.1	13 769.5

ROOM OCCUPANCY RATE (%)

2007

March Quarter	31.5	48.9	58.5	71.7	79.5	47.2	65.1
---------------	------	------	------	------	------	------	------

2008

January	31.8	46.2	56.2	67.7	68.6	46.1	61.5
February	32.2	46.7	58.2	71.5	78.9	47.9	65.1
March	33.0	48.7	60.3	70.0	74.4	49.1	64.8
March Quarter	32.4	47.2	58.2	69.7	73.8	47.7	63.8

GUEST NIGHTS OCCUPIED ('000)

2007

March Quarter	116.5	923.5	8 078.0	12 024.8	2 610.0	637.8	24 390.7
---------------	-------	-------	---------	----------	---------	-------	----------

2008

January	38.4	295.0	2 922.8	4 506.9	897.7	228.3	8 889.0
February	32.8	257.0	2 432.5	3 696.5	843.5	190.6	7 452.9
March	36.5	299.8	2 808.0	4 089.1	886.8	218.1	8 338.3
March Quarter	107.8	851.7	8 163.3	12 292.5	2 628.0	636.9	24 680.2

BED OCCUPANCY RATE (%)

2007

March Quarter	17.9	30.1	36.2	45.2	51.0	28.5	40.6
---------------	------	------	------	------	------	------	------

2008

January	19.3	29.0	38.1	47.7	47.2	29.4	42.3
February	17.8	27.0	34.1	41.9	47.4	26.3	38.0
March	18.4	29.1	36.8	43.3	46.6	27.9	39.7
March Quarter	18.5	28.4	36.4	44.4	47.1	27.9	40.1

	STAR GRADING						
Period	1	2	3	4	5	Ungraded	Total
GUEST ARRIVALS ('000)							
2007							
March Quarter	71.7	537.7	3 974.8	4 743.7	1 047.8	277.5	10 653.2
2008							
January	23.5	172.0	1 388.0	1 634.2	324.7	93.4	3 635.9
February	19.9	147.6	1 231.8	1 565.2	353.4	86.1	3 403.9
March	22.3	173.9	1 397.1	1 686.0	360.6	96.5	3 736.4
March Quarter	65.7	493.4	4 016.8	4 885.4	1 038.8	276.0	10 776.2
AVERAGE LENGTH OF STAY (days)							
2007							
March Quarter	1.6	1.7	2.0	2.5	2.5	2.3	2.3
2008							
January	1.6	1.7	2.1	2.8	2.8	2.4	2.4
February	1.7	1.7	2.0	2.4	2.4	2.2	2.2
March	1.6	1.7	2.0	2.4	2.5	2.3	2.2
March Quarter	1.6	1.7	2.0	2.5	2.5	2.3	2.3
TAKINGS FROM ACCOMMODATION (\$'000)							
2007							
March Quarter	4 818	38 627	451 746	987 353	385 200	40 014	1 907 758
2008							
January	1 415	13 220	162 835	363 853	133 803	15 092	690 218
February	1 375	12 232	149 471	352 838	144 517	14 228	674 662
March	1 486	13 792	166 899	371 050	146 477	15 596	715 301
March Quarter	4 276	39 244	479 205	1 087 741	424 797	44 916	2 080 180
AVERAGE TAKINGS PER ROOM NIGHT OCCUPIED (\$)							
2007							
March Quarter	71.79	72.91	101.80	150.15	235.85	106.61	140.08
2008							
January	66.71	79.85	110.27	164.32	257.27	117.41	152.49
February	68.84	78.20	104.84	161.49	258.40	114.52	150.91
March	67.46	78.32	105.57	161.90	259.60	113.54	149.88
March Quarter	67.64	78.79	106.88	162.57	258.45	115.13	151.07
AVERAGE TAKINGS PER ROOM NIGHT AVAILABLE (\$)							
2007							
March Quarter	22.59	35.67	59.52	107.68	187.56	50.36	91.26
2008							
January	21.21	36.92	61.92	111.23	176.45	54.16	93.75
February	22.19	36.50	61.06	115.41	203.77	54.86	98.19
March	22.29	38.17	63.67	113.30	193.17	55.75	97.16
March Quarter	21.89	37.21	62.25	113.27	190.85	54.92	96.32

<i>Period</i>	<i>New South Wales</i>	<i>Victoria</i>	<i>Queensland</i>	<i>South Australia</i>	<i>Western Australia</i>	<i>Tasmania</i>	<i>Northern Territory</i>	<i>Australian Capital Territory</i>	<i>Australia</i>
---------------	------------------------	-----------------	-------------------	------------------------	--------------------------	-----------------	---------------------------	-------------------------------------	------------------

ESTABLISHMENTS (no.)

2007									
March Quarter	608	458	421	146	145	126	13	2	1 919
June Quarter	613	458	425	143	142	123	12	2	1 918
September Quarter	612	461	424	143	142	125	12	2	1 921
December Quarter	613	462	426	142	144	124	12	2	1 925
2008									
March Quarter	617	459	427	144	147	123	11	3	1 931

ROOMS (no.)

2007									
March Quarter	6 005	4 400	4 201	1 399	1 241	1 034	np	np	18 441
June Quarter	6 066	4 411	4 222	1 374	1 221	np	130	np	18 464
September Quarter	6 050	4 417	4 228	1 378	1 218	np	130	np	18 475
December Quarter	6 031	4 445	4 236	1 359	1 219	1 031	np	np	18 470
2008									
March Quarter	6 087	4 445	4 244	1 381	1 252	1 013	np	np	18 570

BED SPACES (no.)

2007									
March Quarter	17 431	12 494	13 184	3 666	3 990	2 887	np	np	54 121
June Quarter	17 631	12 518	13 215	3 582	3 963	np	380	np	54 171
September Quarter	17 542	12 671	13 240	3 643	3 905	np	378	np	54 293
December Quarter	17 441	12 865	13 292	3 571	3 875	2 872	np	np	54 344
2008									
March Quarter	17 537	12 839	13 359	3 561	4 002	2 783	np	np	54 506

PERSONS EMPLOYED (no.)

2007									
March Quarter	3 058	2 549	2 240	1 826	1 030	784	np	np	11 542
June Quarter	3 148	2 556	2 288	1 746	1 005	np	56	np	11 604
September Quarter	3 135	2 555	2 350	1 842	982	np	52	np	11 756
December Quarter	3 182	2 640	2 261	1 850	1 003	814	np	np	11 812
2008									
March Quarter	3 139	2 629	2 190	1 856	1 015	858	np	np	11 750

ROOM NIGHTS OCCUPIED ('000)

2007									
March Quarter	240.0	181.4	192.5	53.1	57.3	55.8	np	np	785.1
June Quarter	225.4	158.6	207.9	48.3	55.7	np	6.2	np	739.0
September Quarter	240.7	153.7	234.9	47.2	53.2	np	6.9	np	768.3
December Quarter	242.1	173.2	213.5	50.8	55.8	45.2	np	np	787.6
2008									
March Quarter	244.4	182.3	190.8	51.8	57.0	56.4	np	np	788.3

ROOM OCCUPANCY RATE (%)

2007									
March Quarter	45.2	46.4	51.2	42.7	52.4	60.5	np	np	47.9
June Quarter	41.3	39.8	54.2	38.8	50.1	np	52.7	np	44.3
September Quarter	43.4	38.0	60.4	37.3	47.9	np	57.8	np	45.4
December Quarter	44.1	42.5	54.9	40.7	49.9	47.7	np	np	46.6
2008									
March Quarter	44.2	45.4	49.6	41.3	50.7	61.6	np	np	46.9

np not available for publication but included in totals where applicable, unless otherwise indicated

<i>Period</i>	<i>New South Wales</i>	<i>Victoria</i>	<i>Queensland</i>	<i>South Australia</i>	<i>Western Australia</i>	<i>Tasmania</i>	<i>Northern Territory</i>	<i>Australian Capital Territory</i>	<i>Australia</i>
GUEST NIGHTS OCCUPIED ('000)									
2007									
March Quarter	458.6	340.2	359.3	90.1	123.2	112.2	np	np	1 492.1
June Quarter	410.6	282.6	374.7	80.0	112.7	np	10.5	np	1 337.5
September Quarter	445.2	277.1	429.2	77.5	105.1	np	13.7	np	1 403.4
December Quarter	447.9	318.7	398.8	83.5	115.7	86.9	np	np	1 461.6
2008									
March Quarter	460.7	348.8	363.2	85.9	121.6	113.7	np	np	1 502.0
BED OCCUPANCY RATE (%)									
2007									
March Quarter	29.9	30.7	30.4	27.6	35.1	43.7	np	np	31.1
June Quarter	25.9	25.1	31.2	24.6	31.3	np	30.4	np	27.3
September Quarter	27.7	23.9	35.2	23.2	29.6	np	39.3	np	28.2
December Quarter	28.2	27.0	32.7	25.5	32.6	32.9	np	np	29.4
2008									
March Quarter	29.0	30.1	30.0	26.5	33.8	45.2	np	np	30.4
GUEST ARRIVALS ('000)									
2007									
March Quarter	257.6	198.7	175.8	54.7	54.0	65.0	np	np	811.0
June Quarter	241.7	174.5	189.5	48.1	53.2	np	6.7	np	750.8
September Quarter	265.4	172.6	211.6	45.9	51.8	np	9.3	np	786.7
December Quarter	258.8	201.6	197.2	48.6	57.0	48.2	np	np	817.3
2008									
March Quarter	254.0	209.9	178.0	47.6	54.6	69.7	np	np	819.2
AVERAGE LENGTH OF STAY (days)									
2007									
March Quarter	1.8	1.7	2.0	1.6	2.3	1.7	np	np	1.8
June Quarter	1.7	1.6	2.0	1.7	2.1	np	1.6	np	1.8
September Quarter	1.7	1.6	2.0	1.7	2.0	np	1.5	np	1.8
December Quarter	1.7	1.6	2.0	1.7	2.0	1.8	np	np	1.8
2008									
March Quarter	1.8	1.7	2.0	1.8	2.2	1.6	np	np	1.8
TAKINGS FROM ACCOMMODATION (\$'000)									
2007									
March Quarter	23 077	17 589	16 375	4 611	6 745	6 653	np	np	75 437
June Quarter	20 848	14 440	17 349	3 985	6 593	np	559	np	67 716
September Quarter	24 022	14 688	20 574	3 852	6 334	np	634	np	73 442
December Quarter	23 894	16 888	19 551	4 358	6 938	5 316	np	np	77 467
2008									
March Quarter	24 426	18 933	17 613	4 505	7 621	6 825	np	np	80 407
AVERAGE TAKINGS PER ROOM NIGHT OCCUPIED (\$)									
2007									
March Quarter	96.16	96.95	85.07	86.90	117.64	119.32	np	np	96.09
June Quarter	92.48	91.06	83.43	82.43	118.35	np	89.63	np	91.63
September Quarter	99.79	95.56	87.57	81.59	119.17	np	91.66	np	95.58
December Quarter	98.69	97.53	91.57	85.75	124.37	117.72	np	np	98.36
2008									
March Quarter	99.93	103.86	92.33	86.99	133.72	121.10	np	np	102.00

np not available for publication but included in totals where applicable, unless otherwise indicated

<i>Period</i>	<i>New South Wales</i>	<i>Victoria</i>	<i>Queensland</i>	<i>South Australia</i>	<i>Western Australia</i>	<i>Tasmania</i>	<i>Northern Territory</i>	<i>Australian Capital Territory</i>	<i>Australia</i>
AVERAGE TAKINGS PER ROOM NIGHT AVAILABLE (\$)									
2007									
March Quarter	43.50	44.95	43.52	37.07	61.69	72.13	np	np	46.07
June Quarter	38.20	36.28	45.20	32.00	59.34	np	47.24	np	40.55
September Quarter	43.31	36.27	52.89	30.46	57.09	np	53.01	np	43.37
December Quarter	43.49	41.47	50.26	34.93	62.04	56.11	np	np	45.82
2008									
March Quarter	44.15	47.18	45.82	35.89	67.76	74.57	np	np	47.82

np not available for publication but included in totals where applicable, unless otherwise indicated

<i>Period</i>	<i>New South Wales</i>	<i>Victoria</i>	<i>Queensland</i>	<i>South Australia</i>	<i>Western Australia</i>	<i>Tasmania</i>	<i>Northern Territory</i>	<i>Australian Capital Territory</i>	<i>Australia</i>
ESTABLISHMENTS (no.)									
2007									
March Quarter	1 421	795	1 084	253	345	157	93	57	4 205
June Quarter	1 416	793	1 093	253	347	155	92	57	4 206
September Quarter	1 421	795	1 100	253	349	154	92	56	4 220
December Quarter	1 427	796	1 104	255	352	155	91	55	4 235
2008									
March Quarter	1 427	797	1 118	254	350	157	92	55	4 250
ROOMS (no.)									
2007									
March Quarter	69 071	37 694	58 004	11 735	21 017	6 581	6 650	5 011	215 763
June Quarter	68 929	37 601	58 666	11 547	21 088	6 539	6 614	5 023	216 007
September Quarter	68 986	37 742	59 257	11 564	21 172	6 466	6 710	4 948	216 845
December Quarter	69 697	37 835	59 592	11 732	21 359	6 572	6 587	4 943	218 317
2008									
March Quarter	70 292	37 963	60 579	11 707	21 460	6 623	6 603	5 076	220 303
BED SPACES (no.)									
2007									
March Quarter	193 589	102 946	178 731	32 269	57 413	18 986	20 352	14 901	619 187
June Quarter	192 997	102 418	180 900	31 430	57 196	18 796	20 111	14 885	618 733
September Quarter	192 495	103 552	182 166	31 606	57 510	18 549	20 269	14 622	620 769
December Quarter	194 274	103 048	184 355	31 948	57 935	18 763	19 985	14 443	624 751
2008									
March Quarter	194 780	103 803	186 198	32 075	57 720	18 696	19 727	14 953	627 952
PERSONS EMPLOYED (no.)									
2007									
March Quarter	33 587	21 987	32 221	7 346	10 608	4 604	2 921	2 429	115 703
June Quarter	33 257	21 951	32 179	7 286	10 734	4 490	3 012	2 431	115 340
September Quarter	33 549	21 783	32 296	7 193	10 714	4 489	3 107	2 308	115 439
December Quarter	33 643	22 022	32 669	7 242	10 757	4 627	2 895	2 382	116 237
2008									
March Quarter	33 497	21 918	32 251	7 183	11 201	4 656	2 941	2 518	116 165
ROOM NIGHTS OCCUPIED ('000)									
2007									
March Quarter	4 055.9	2 307.2	3 383.7	699.7	1 312.7	426.2	311.9	336.4	12 833.8
June Quarter	3 726.6	2 095.3	3 361.0	656.5	1 265.8	311.8	397.2	314.0	12 128.2
September Quarter	4 055.3	2 207.0	3 949.0	669.0	1 378.2	290.3	482.2	349.8	13 380.7
December Quarter	4 158.5	2 268.4	3 745.1	706.1	1 387.7	387.6	388.0	317.9	13 359.4
2008									
March Quarter	4 170.0	2 303.7	3 366.3	699.5	1 354.7	446.1	331.3	309.7	12 981.2
Year ended March 2007	15 627.6	8 718.1	14 163.0	2 681.9	5 146.5	1 357.9	1 530.7	1 347.6	50 573.3
Year ended March 2008	16 110.4	8 874.3	14 421.4	2 731.0	5 386.4	1 435.9	1 598.7	1 291.4	51 849.5

<i>Period</i>	<i>New South Wales</i>	<i>Victoria</i>	<i>Queensland</i>	<i>South Australia</i>	<i>Western Australia</i>	<i>Tasmania</i>	<i>Northern Territory</i>	<i>Australian Capital Territory</i>	<i>Australia</i>
ROOM OCCUPANCY RATE (%)									
2007									
March Quarter	66.1	69.0	65.0	66.3	69.9	71.9	52.3	74.6	66.6
June Quarter	59.9	61.6	63.0	62.5	66.1	52.4	66.0	69.3	61.9
September Quarter	64.0	63.7	72.5	62.9	70.8	48.8	78.1	76.8	67.1
December Quarter	65.3	65.8	68.3	65.4	70.6	64.1	64.0	69.9	66.8
2008									
March Quarter	65.7	67.5	61.4	65.7	69.6	74.3	55.3	67.1	65.2
Year ended March 2007	63.0	64.3	67.7	63.0	66.9	57.1	63.5	73.4	65.0
Year ended March 2008	63.7	64.6	66.3	64.1	69.3	60.0	65.9	70.8	65.3
GUEST NIGHTS OCCUPIED ('000)									
2007									
March Quarter	7 112.6	3 931.7	6 610.3	1 168.3	2 211.6	804.3	510.5	549.2	22 898.5
June Quarter	6 293.3	3 441.9	6 354.9	1 039.4	2 050.8	554.2	682.4	493.6	20 910.5
September Quarter	6 905.2	3 705.0	7 547.7	1 058.0	2 231.7	498.8	839.0	587.3	23 372.8
December Quarter	7 109.5	3 821.6	7 371.7	1 144.6	2 302.4	711.5	633.6	525.1	23 620.1
2008									
March Quarter	7 314.3	3 917.3	6 629.7	1 139.4	2 266.7	860.7	558.8	491.3	23 178.2
Year ended March 2007	26 861.4	14 654.7	27 544.4	4 353.7	8 530.9	2 434.0	2 703.8	2 212.4	89 295.2
Year ended March 2008	27 622.3	14 886.0	27 904.1	4 381.5	8 851.5	2 625.2	2 713.8	2 097.3	91 081.7
BED OCCUPANCY RATE (%)									
2007									
March Quarter	41.4	43.3	41.2	40.2	43.1	47.1	28.0	40.9	41.5
June Quarter	36.2	37.2	38.6	36.3	39.5	32.4	37.3	36.8	37.3
September Quarter	39.0	39.0	45.1	36.4	42.2	29.3	45.0	43.7	41.0
December Quarter	40.0	40.7	43.5	38.9	43.2	41.2	34.5	39.5	41.2
2008									
March Quarter	41.7	42.2	39.3	39.0	43.3	50.8	31.3	36.1	40.9
Year ended March 2007	38.7	39.7	42.4	37.3	40.6	35.4	37.4	41.3	40.0
Year ended March 2008	39.2	39.8	41.6	37.7	42.0	38.4	37.1	39.0	40.1
GUEST ARRIVALS ('000)									
2007									
March Quarter	3 316.1	1 748.9	2 471.5	540.1	858.6	425.1	251.7	230.1	9 842.1
June Quarter	3 129.4	1 637.1	2 510.1	521.5	840.9	285.3	336.4	222.2	9 482.9
September Quarter	3 390.3	1 744.6	2 868.9	549.2	925.2	264.2	456.2	284.9	10 483.5
December Quarter	3 576.3	1 889.1	2 766.8	588.6	970.1	389.0	340.7	234.7	10 755.3
2008									
March Quarter	3 358.0	1 787.8	2 421.3	552.6	869.3	462.3	289.6	216.2	9 957.0
Year ended March 2007	13 125.3	6 805.4	10 343.0	2 169.2	3 474.0	1 270.1	1 300.1	939.8	39 426.9
Year ended March 2008	13 454.0	7 058.6	10 567.1	2 211.9	3 605.5	1 400.7	1 422.8	957.9	40 678.6

<i>Period</i>	<i>New South Wales</i>	<i>Victoria</i>	<i>Queensland</i>	<i>South Australia</i>	<i>Western Australia</i>	<i>Tasmania</i>	<i>Northern Territory</i>	<i>Australian Capital Territory</i>	<i>Australia</i>
AVERAGE LENGTH OF STAY (days)									
2007									
March Quarter	2.1	2.2	2.7	2.2	2.6	1.9	2.0	2.4	2.3
June Quarter	2.0	2.1	2.5	2.0	2.4	1.9	2.0	2.2	2.2
September Quarter	2.0	2.1	2.6	1.9	2.4	1.9	1.8	2.1	2.2
December Quarter	2.0	2.0	2.7	1.9	2.4	1.8	1.9	2.2	2.2
2008									
March Quarter	2.2	2.2	2.7	2.1	2.6	1.9	1.9	2.3	2.3
Year ended March 2007	2.0	2.2	2.7	2.0	2.5	1.9	2.1	2.4	2.3
Year ended March 2008	2.1	2.1	2.6	2.0	2.5	1.9	1.9	2.2	2.2
TAKINGS FROM ACCOMMODATION (\$'000)									
2007									
March Quarter	619 025	349 868	458 620	86 408	177 003	55 236	38 181	47 979	1 832 321
June Quarter	533 278	301 112	445 375	77 938	172 641	37 606	53 437	45 748	1 667 135
September Quarter	615 632	336 516	560 050	80 111	191 220	34 890	73 642	50 520	1 942 581
December Quarter	650 192	353 183	552 210	89 674	207 320	50 254	52 242	45 558	2 000 634
2008									
March Quarter	672 035	378 521	498 659	93 220	205 741	59 952	42 683	48 961	1 999 773
Year ended March 2007	2 280 490	1 261 719	1 890 928	313 553	668 218	168 896	201 739	180 395	6 965 938
Year ended March 2008	2 471 138	1 369 332	2 056 295	340 943	776 923	182 702	222 004	190 787	7 610 124
AVERAGE TAKINGS PER ROOM NIGHT OCCUPIED (\$)									
2007									
March Quarter	152.62	151.64	135.54	123.49	134.84	129.61	122.40	142.61	142.77
June Quarter	143.10	143.71	132.51	118.72	136.39	120.60	134.54	145.68	137.46
September Quarter	151.81	152.48	141.82	119.75	138.75	120.17	152.74	144.43	145.18
December Quarter	156.35	155.70	147.45	127.01	149.39	129.64	134.64	143.31	149.75
2008									
March Quarter	161.16	164.31	148.13	133.27	151.87	134.39	128.82	158.12	154.05
Year ended March 2007	145.93	144.72	133.51	116.92	129.84	124.38	131.79	133.86	137.74
Year ended March 2008	153.39	154.30	142.59	124.84	144.24	127.24	138.87	147.74	146.77
AVERAGE TAKINGS PER ROOM NIGHT AVAILABLE (\$)									
2007									
March Quarter	100.84	104.58	88.07	81.81	94.21	93.26	64.02	106.39	95.10
June Quarter	85.72	88.49	83.43	74.17	90.15	63.20	88.78	101.02	85.15
September Quarter	97.12	97.09	102.78	75.33	98.17	58.69	119.29	110.98	97.46
December Quarter	102.08	102.43	100.74	83.08	105.51	83.12	86.21	100.18	99.99
2008									
March Quarter	105.91	110.98	90.92	87.52	105.67	99.84	71.26	106.07	100.42
Year ended March 2007	91.93	93.02	90.41	73.65	86.83	71.04	83.68	98.25	89.46
Year ended March 2008	97.77	99.75	94.53	80.06	99.93	76.30	91.58	104.57	95.80

Period	New South Wales	Victoria	Queensland	South Australia	Western Australia	Tasmania	Northern Territory	Australian Capital Territory	Australia
ESTABLISHMENTS (no.)									
2007									
March Quarter	2 029	1 253	1 505	399	490	283	106	59	6 124
June Quarter	2 029	1 251	1 518	396	489	278	104	59	6 124
September Quarter	2 033	1 256	1 524	396	491	279	104	58	6 141
December Quarter	2 040	1 258	1 530	397	496	279	103	57	6 160
2008									
March Quarter	2 044	1 256	1 545	398	497	280	103	58	6 181
ROOMS (no.)									
2007									
March Quarter	75 076	42 094	62 205	13 134	22 258	7 615	np	np	234 204
June Quarter	74 995	42 012	62 888	12 921	22 309	np	6 744	np	234 471
September Quarter	75 036	42 159	63 485	12 942	22 390	np	6 840	np	235 320
December Quarter	75 728	42 280	63 828	13 091	22 578	7 603	np	np	236 787
2008									
March Quarter	76 379	42 408	64 823	13 088	22 712	7 636	np	np	238 873
BED SPACES (no.)									
2007									
March Quarter	211 020	115 440	191 915	35 935	61 403	21 873	np	np	673 308
June Quarter	210 628	114 936	194 115	35 012	61 159	np	20 491	np	672 904
September Quarter	210 037	116 223	195 406	35 249	61 415	np	20 647	np	675 062
December Quarter	211 715	115 913	197 647	35 519	61 810	21 635	np	np	679 095
2008									
March Quarter	212 317	116 642	199 557	35 636	61 722	21 479	np	np	682 458
PERSONS EMPLOYED (no.)									
2007									
March Quarter	36 645	24 536	34 461	9 172	11 638	5 388	np	np	127 245
June Quarter	36 405	24 507	34 467	9 032	11 739	np	3 068	np	126 944
September Quarter	36 684	24 338	34 646	9 035	11 696	np	3 159	np	127 195
December Quarter	36 825	24 662	34 930	9 092	11 760	5 441	np	np	128 049
2008									
March Quarter	36 636	24 547	34 441	9 039	12 216	5 514	np	np	127 915
ROOM NIGHTS OCCUPIED ('000)									
2007									
March Quarter	4 295.9	2 488.6	3 576.2	752.8	1 370.0	481.9	np	np	13 618.9
June Quarter	3 952.1	2 253.9	3 568.9	704.8	1 321.5	np	403.4	np	12 867.2
September Quarter	4 296.0	2 360.7	4 183.9	716.2	1 431.3	np	489.1	np	14 149.1
December Quarter	4 400.6	2 441.5	3 958.6	756.9	1 443.5	432.8	np	np	14 147.0
2008									
March Quarter	4 414.4	2 486.0	3 557.0	751.3	1 411.7	502.5	np	np	13 769.5
ROOM OCCUPANCY RATE (%)									
2007									
March Quarter	64.4	66.6	64.0	63.8	68.9	70.4	np	np	65.1
June Quarter	58.4	59.3	62.4	60.0	65.2	np	65.7	np	60.6
September Quarter	62.3	61.0	71.7	60.2	69.5	np	77.7	np	65.4
December Quarter	63.6	63.3	67.4	62.9	69.5	61.9	np	np	65.2
2008									
March Quarter	64.0	65.2	60.6	63.1	68.5	72.6	np	np	63.8

np not available for publication but included in totals where applicable, unless otherwise indicated

<i>Period</i>	<i>New South Wales</i>	<i>Victoria</i>	<i>Queensland</i>	<i>South Australia</i>	<i>Western Australia</i>	<i>Tasmania</i>	<i>Northern Territory</i>	<i>Australian Capital Territory</i>	<i>Australia</i>
GUEST NIGHTS OCCUPIED ('000)									
2007									
March Quarter	7 571.2	4 271.9	6 969.7	1 258.5	2 334.9	916.5	np	np	24 390.7
June Quarter	6 703.9	3 724.6	6 729.6	1 119.5	2 163.5	np	692.9	np	22 248.0
September Quarter	7 350.4	3 982.2	7 976.9	1 135.5	2 336.8	np	852.7	np	24 776.2
December Quarter	7 557.3	4 140.4	7 770.5	1 228.1	2 418.1	798.4	np	np	25 081.8
2008									
March Quarter	7 775.0	4 266.2	6 992.9	1 225.3	2 388.3	974.4	np	np	24 680.2
BED OCCUPANCY RATE (%)									
2007									
March Quarter	40.5	41.9	40.4	39.0	42.6	46.6	np	np	40.6
June Quarter	35.3	35.9	38.1	35.1	38.9	np	37.2	np	36.5
September Quarter	38.1	37.3	44.4	35.0	41.4	np	44.9	np	39.9
December Quarter	39.1	39.2	42.7	37.6	42.5	40.1	np	np	40.3
2008									
March Quarter	40.6	40.9	38.7	37.8	42.7	50.0	np	np	40.1
GUEST ARRIVALS ('000)									
2007									
March Quarter	3 573.8	1 947.6	2 647.3	594.8	912.6	490.1	np	np	10 653.2
June Quarter	3 371.1	1 811.6	2 699.6	569.7	894.1	np	343.1	np	10 233.7
September Quarter	3 655.7	1 917.3	3 080.4	595.1	977.0	np	465.5	np	11 270.2
December Quarter	3 835.1	2 090.7	2 964.0	637.2	1 027.1	437.2	np	np	11 572.5
2008									
March Quarter	3 612.0	1 997.7	2 599.2	600.2	923.9	532.0	np	np	10 776.2
AVERAGE LENGTH OF STAY (days)									
2007									
March Quarter	2.1	2.2	2.6	2.1	2.6	1.9	np	np	2.3
June Quarter	2.0	2.1	2.5	2.0	2.4	np	2.0	np	2.2
September Quarter	2.0	2.1	2.6	1.9	2.4	np	1.8	np	2.2
December Quarter	2.0	2.0	2.6	1.9	2.4	1.8	np	np	2.2
2008									
March Quarter	2.2	2.1	2.7	2.0	2.6	1.8	np	np	2.3
TAKINGS FROM ACCOMMODATION (\$'000)									
2007									
March Quarter	642 102	367 457	474 995	91 018	183 749	61 890	np	np	1 907 758
June Quarter	554 126	315 552	462 724	81 922	179 234	np	53 996	np	1 734 851
September Quarter	639 654	351 204	580 624	83 963	197 555	np	74 276	np	2 016 023
December Quarter	674 086	370 070	571 760	94 032	214 259	55 570	np	np	2 078 102
2008									
March Quarter	696 461	397 454	516 273	97 724	213 363	66 778	np	np	2 080 180
AVERAGE TAKINGS PER ROOM NIGHT OCCUPIED (\$)									
2007									
March Quarter	149.47	147.65	132.82	120.91	134.12	128.42	np	np	140.08
June Quarter	140.21	140.00	129.65	116.23	135.63	np	133.84	np	134.83
September Quarter	148.89	148.77	138.77	117.23	138.02	np	151.87	np	142.48
December Quarter	153.18	151.57	144.43	124.24	148.43	128.40	np	np	146.89
2008									
March Quarter	157.77	159.88	145.14	130.08	151.14	132.90	np	np	151.07

np not available for publication but included in totals where applicable, unless otherwise indicated

<i>Period</i>	<i>New South Wales</i>	<i>Victoria</i>	<i>Queensland</i>	<i>South Australia</i>	<i>Western Australia</i>	<i>Tasmania</i>	<i>Northern Territory</i>	<i>Australian Capital Territory</i>	<i>Australia</i>
AVERAGE TAKINGS PER ROOM NIGHT AVAILABLE (\$)									
2007									
March Quarter	96.28	98.34	85.06	77.10	92.42	90.41	np	np	91.26
June Quarter	81.89	83.02	80.86	69.70	88.46	np	87.98	np	81.65
September Quarter	92.79	90.72	99.45	70.56	95.96	np	118.03	np	93.22
December Quarter	97.43	95.99	97.40	78.09	103.16	79.46	np	np	95.77
2008									
March Quarter	100.96	104.26	87.96	82.08	103.60	96.50	np	np	96.32

np not available for publication but included in totals where applicable, unless otherwise indicated

Period	New South Wales	Victoria	Queensland	South Australia	Western Australia	Tasmania	Northern Territory	Australian Capital Territory	Australia
ESTABLISHMENTS (no.)									
2007									
March Quarter	444	357	256	135	168	46	48	3	1 457
June Quarter	443	356	256	135	171	46	49	3	1 459
September Quarter	443	357	255	135	170	47	49	3	1 459
December Quarter	439	356	256	135	171	47	49	3	1 456
2008									
March Quarter	436	356	254	135	171	46	48	3	1 449
ON-SITE VANS (no.)									
2007									
March Quarter	7 047	2 563	1 557	412	1 187	np	np	58	13 123
June Quarter	7 541	2 632	1 565	483	1 271	np	np	np	13 843
September Quarter	6 832	2 796	1 606	401	1 243	np	np	np	13 250
December Quarter	7 024	2 489	1 656	405	1 351	np	np	58	13 264
2008									
March Quarter	7 182	2 692	1 626	400	1 376	np	np	58	13 647
OTHER POWERED SITES (no.)									
2007									
March Quarter	40 060	33 266	19 155	11 645	14 709	np	np	373	126 445
June Quarter	39 441	32 990	19 092	11 460	14 681	np	np	np	125 372
September Quarter	39 641	32 818	18 762	11 523	14 818	np	np	np	125 290
December Quarter	39 772	33 289	19 051	11 565	14 808	np	np	373	126 223
2008									
March Quarter	39 256	33 164	18 972	11 578	14 760	np	np	373	125 263
UNPOWERED SITES (no.)									
2007									
March Quarter	10 971	9 595	5 720	4 373	3 321	np	np	400	38 895
June Quarter	11 063	9 290	5 637	4 358	3 210	np	np	np	38 475
September Quarter	10 935	9 741	5 546	4 314	3 234	np	np	np	38 749
December Quarter	11 117	9 653	5 633	4 225	3 254	np	np	400	38 884
2008									
March Quarter	11 054	9 669	5 581	4 202	3 286	np	np	400	38 703
CABINS FLATS, UNITS AND VILLAS (no.)									
2007									
March Quarter	10 027	4 957	4 283	2 383	2 621	np	np	105	26 038
June Quarter	9 870	5 178	4 274	2 370	2 628	np	np	np	26 108
September Quarter	10 057	5 125	4 487	2 392	2 561	np	np	np	26 428
December Quarter	9 800	5 005	4 544	2 418	2 682	np	np	105	26 299
2008									
March Quarter	10 006	5 214	4 565	2 451	2 783	np	np	105	26 812
TOTAL CAPACITY (no.)									
2007									
March Quarter	68 105	50 381	30 715	18 813	21 838	np	np	936	204 501
June Quarter	67 915	50 090	30 568	18 671	21 790	np	np	np	203 798
September Quarter	67 465	50 480	30 401	18 630	21 856	np	np	np	203 717
December Quarter	67 713	50 436	30 884	18 613	22 095	np	np	936	204 670
2008									
March Quarter	67 498	50 739	30 744	18 631	22 205	np	np	936	204 425

np not available for publication but included in totals where applicable, unless otherwise indicated

(a) Comprising establishments with 40 or more powered sites and cabins, flats, units and villas.

Period	New South Wales	Victoria	Queensland	South Australia	Western Australia	Tasmania	Northern Territory	Australian Capital Territory	Australia
--------	-----------------	----------	------------	-----------------	-------------------	----------	--------------------	------------------------------	-----------

PERSONS EMPLOYED (no.)

2007									
March Quarter	2 869	1 667	1 377	831	1 127	np	np	82	8 793
June Quarter	2 751	1 589	1 436	804	1 163	np	np	np	8 639
September Quarter	2 791	1 578	1 468	821	1 153	np	np	np	8 720
December Quarter	3 015	1 746	1 447	824	1 208	np	np	92	9 093
2008									
March Quarter	2 910	1 754	1 444	826	1 228	np	np	84	9 051

SITES OCCUPIED BY LONG-TERM GUESTS (no.)

2007									
March Quarter	6 165	2 803	4 614	1 020	2 833	np	np	150	18 346
June Quarter	6 038	2 792	4 706	1 036	2 945	np	np	np	18 497
September Quarter	6 021	2 826	4 980	1 045	3 032	np	np	np	18 924
December Quarter	5 991	2 633	4 808	954	3 161	np	np	155	18 570
2008									
March Quarter	5 877	2 614	4 687	983	3 330	np	np	155	18 382

OTHER SITES PERMANENTLY RESERVED (no.)

2007									
March Quarter	19 341	14 918	957	2 143	1 883	np	np	5	40 149
June Quarter	18 906	14 967	903	2 063	1 782	np	np	np	39 592
September Quarter	19 436	14 815	921	2 148	1 830	np	np	np	40 069
December Quarter	18 620	14 801	918	2 155	1 681	np	np	5	39 122
2008									
March Quarter	19 230	15 313	915	2 120	1 651	np	np	5	40 152

SITE NIGHTS OCCUPIED ('000)

2007									
March Quarter	3 664.1	2 439.5	1 100.0	730.4	858.9	np	np	32.3	9 158.4
June Quarter	3 296.5	2 107.0	1 424.8	645.9	958.0	np	np	np	8 923.0
September Quarter	3 325.0	1 989.5	1 756.4	587.5	1 103.2	np	np	np	9 332.2
December Quarter	3 529.8	2 265.1	1 321.4	692.4	913.1	np	np	30.0	9 122.4
2008									
March Quarter	3 735.1	2 578.6	1 127.6	754.1	948.0	np	np	31.4	9 535.8

SITE OCCUPANCY RATE (%)

2007									
March Quarter	59.8	53.9	39.9	43.3	44.2	np	np	38.4	50.0
June Quarter	53.3	47.1	51.2	38.3	48.4	np	np	np	48.4
September Quarter	53.6	44.7	62.8	34.3	55.0	np	np	np	50.4
December Quarter	56.7	50.1	46.5	40.4	44.9	np	np	34.9	48.8
2008									
March Quarter	60.8	55.9	40.3	44.5	47.0	np	np	36.9	51.3

np not available for publication but included in totals where applicable, unless otherwise indicated

(a) Comprising establishments with 40 or more powered sites and cabins, flats, units and villas.

<i>Period</i>	<i>New South Wales</i>	<i>Victoria</i>	<i>Queensland</i>	<i>South Australia</i>	<i>Western Australia</i>	<i>Tasmania</i>	<i>Northern Territory</i>	<i>Australian Capital Territory</i>	<i>Australia</i>
TAKINGS FROM ACCOMMODATION (\$'000)									
2007									
March Quarter	81 640	40 934	29 659	18 265	22 931	np	np	1 198	204 863
June Quarter	62 817	28 656	39 529	14 551	24 457	np	np	np	184 584
September Quarter	59 825	29 528	50 491	12 770	29 462	np	np	np	198 294
December Quarter	80 612	40 246	38 331	17 144	25 865	np	np	1 002	213 778
2008									
March Quarter	90 350	49 413	32 862	20 123	28 772	np	np	1 123	234 706

np not available for publication but included in totals where applicable,
unless otherwise indicated

(a) Comprising establishments with 40 or more powered sites and cabins,
flats, units and villas.

Period	New South Wales	Victoria	Queensland	South Australia	Western Australia	Tasmania	Northern Territory	Australian Capital Territory	Australia
--------	-----------------	----------	------------	-----------------	-------------------	----------	--------------------	------------------------------	-----------

ESTABLISHMENTS (no.)

2007									
March Quarter	76	44	75	8	26	1	2	—	232
June Quarter	74	44	75	8	26	1	2	—	230
September Quarter	76	44	73	8	26	1	2	—	230
December Quarter	75	44	71	8	26	1	2	—	227
2008									
March Quarter	74	43	70	8	26	1	2	—	224

ON-SITE VANS (no.)

2007									
March Quarter	1 188	376	1 923	162	374	np	np	—	4 032
June Quarter	1 183	376	1 890	259	377	np	np	—	4 094
September Quarter	1 195	482	1 851	109	373	np	np	—	4 019
December Quarter	1 197	560	1 813	109	365	np	np	—	4 053
2008									
March Quarter	1 204	651	1 944	107	370	np	np	—	4 285

OTHER POWERED SITES (no.)

2007									
March Quarter	5 893	3 768	5 103	688	2 047	np	np	—	17 754
June Quarter	5 816	3 772	5 062	582	2 047	np	np	—	17 529
September Quarter	5 576	3 571	5 038	748	2 057	np	np	—	17 240
December Quarter	5 511	3 545	4 936	749	2 058	np	np	—	17 049
2008									
March Quarter	5 342	3 400	4 734	751	2 063	np	np	—	16 540

UNPOWERED SITES (no.)

2007									
March Quarter	813	355	492	127	179	np	np	—	2 037
June Quarter	807	350	510	104	179	np	np	—	2 028
September Quarter	814	352	454	114	147	np	np	—	1 959
December Quarter	760	357	456	114	156	np	np	—	1 921
2008									
March Quarter	775	357	506	94	157	np	np	—	1 967

CABINS FLATS, UNITS AND VILLAS (no.)

2007									
March Quarter	2 153	1 343	1 785	253	688	np	np	—	6 264
June Quarter	2 306	1 354	1 790	272	668	np	np	—	6 432
September Quarter	2 407	1 454	1 812	260	686	np	np	—	6 661
December Quarter	2 370	1 440	1 799	260	692	np	np	—	6 608
2008									
March Quarter	2 345	1 452	1 795	277	690	np	np	—	6 606

— nil or rounded to zero (including null cells)

np not available for publication but included in totals where applicable, unless otherwise indicated

(a) Comprising establishments with 40 or more powered sites and cabins, flats, units and villas.

Period	New South Wales	Victoria	Queensland	South Australia	Western Australia	Tasmania	Northern Territory	Australian Capital Territory	Australia
TOTAL CAPACITY (no.)									
2007									
March Quarter	10 047	5 842	9 303	1 230	3 288	np	np	—	30 087
June Quarter	10 112	5 852	9 252	1 217	3 271	np	np	—	30 083
September Quarter	9 992	5 859	9 155	1 231	3 263	np	np	—	29 879
December Quarter	9 838	5 902	9 004	1 232	3 271	np	np	—	29 631
2008									
March Quarter	9 666	5 860	8 979	1 229	3 280	np	np	—	29 398
PERSONS EMPLOYED (no.)									
2007									
March Quarter	412	225	446	52	150	np	np	—	1 297
June Quarter	390	231	446	53	153	np	np	—	1 286
September Quarter	425	235	436	54	155	np	np	—	1 319
December Quarter	442	239	443	57	169	np	np	—	1 360
2008									
March Quarter	434	248	428	54	160	np	np	—	1 335
SITES OCCUPIED BY LONG-TERM GUESTS (no.)									
2007									
March Quarter	5 087	3 106	6 063	668	1 909	np	np	—	16 896
June Quarter	5 036	2 990	6 226	585	2 048	np	np	—	16 935
September Quarter	5 039	2 965	6 179	649	2 020	np	np	—	16 911
December Quarter	5 016	2 993	6 181	608	2 039	np	np	—	16 899
2008									
March Quarter	4 718	3 008	5 955	618	2 044	np	np	—	16 403
OTHER SITES PERMANENTLY RESERVED (no.)									
2007									
March Quarter	965	318	370	1	18	np	np	—	1 770
June Quarter	960	314	459	25	18	np	np	—	1 874
September Quarter	958	318	413	24	10	np	np	—	1 787
December Quarter	982	280	297	35	34	np	np	—	1 692
2008									
March Quarter	993	324	227	43	30	np	np	—	1 681
SITE NIGHTS OCCUPIED ('000)									
2007									
March Quarter	673.5	395.2	676.7	74.9	243.7	np	np	—	2 089.8
June Quarter	647.0	365.3	705.2	73.2	237.2	np	np	—	2 049.2
September Quarter	675.1	361.3	714.4	86.3	243.4	np	np	—	2 100.6
December Quarter	695.1	382.4	685.9	85.2	241.6	np	np	—	2 111.6
2008									
March Quarter	678.7	418.0	655.6	81.9	237.1	np	np	—	2 091.3

— nil or rounded to zero (including null cells)

np not available for publication but included in totals where applicable, unless otherwise indicated

(a) Comprising establishments with 40 or more powered sites and cabins, flats, units and villas.

Period	New South Wales	Victoria	Queensland	South Australia	Western Australia	Tasmania	Northern Territory	Australian Capital Territory	Australia
--------	-----------------	----------	------------	-----------------	-------------------	----------	--------------------	------------------------------	-----------

SITE OCCUPANCY RATE (%)

2007									
March Quarter	74.5	75.2	80.8	67.6	82.4	np	np	—	77.2
June Quarter	70.3	68.6	83.8	66.1	79.7	np	np	—	74.9
September Quarter	73.4	67.0	84.8	76.2	81.1	np	np	—	76.4
December Quarter	76.8	70.4	82.8	75.1	80.3	np	np	—	77.5
2008									
March Quarter	77.2	78.5	80.3	73.2	79.4	np	np	—	78.2

TAKINGS FROM ACCOMMODATION (\$'000)

2007									
March Quarter	12 731	6 346	13 032	1 475	5 158	np	np	—	39 148
June Quarter	12 107	5 777	14 034	1 512	4 868	np	np	—	38 661
September Quarter	12 528	6 631	14 708	1 927	5 356	np	np	—	41 655
December Quarter	14 373	7 189	14 765	2 144	5 647	np	np	—	44 525
2008									
March Quarter	14 241	7 583	13 901	1 666	6 439	np	np	—	44 316

— nil or rounded to zero (including null cells)

np not available for publication but included in totals where applicable, unless otherwise indicated

(a) Comprising establishments with 40 or more powered sites and cabins, flats, units and villas.

<i>Period</i>	<i>New South Wales</i>	<i>Victoria</i>	<i>Queensland</i>	<i>South Australia</i>	<i>Western Australia</i>	<i>Tasmania</i>	<i>Northern Territory</i>	<i>Australian Capital Territory</i>	<i>Australia</i>
ESTABLISHMENTS (no.)									
2007									
March Quarter	520	401	331	143	194	47	50	3	1 689
June Quarter	517	400	331	143	197	47	51	3	1 689
September Quarter	519	401	328	143	196	48	51	3	1 689
December Quarter	514	400	327	143	197	48	51	3	1 683
2008									
March Quarter	510	399	324	143	197	47	50	3	1 673
ON-SITE VANS (no.)									
2007									
March Quarter	8 235	2 939	3 480	574	1 561	198	110	58	17 155
June Quarter	8 724	3 008	3 455	742	1 648	np	111	np	17 937
September Quarter	8 027	3 278	3 457	510	1 616	np	110	np	17 269
December Quarter	8 221	3 049	3 469	514	1 716	197	93	58	17 317
2008									
March Quarter	8 386	3 343	3 570	507	1 746	231	91	58	17 932
OTHER POWERED SITES (no.)									
2007									
March Quarter	45 953	37 034	24 258	12 333	16 756	2 995	4 497	373	144 199
June Quarter	45 257	36 762	24 154	12 042	16 728	np	4 575	np	142 901
September Quarter	45 217	36 389	23 800	12 271	16 875	np	4 616	np	142 530
December Quarter	45 283	36 834	23 987	12 314	16 866	3 008	4 607	373	143 272
2008									
March Quarter	44 598	36 564	23 706	12 329	16 823	2 869	4 541	373	141 803
UNPOWERED SITES (no.)									
2007									
March Quarter	11 784	9 950	6 212	4 500	3 500	1 706	2 880	400	40 932
June Quarter	11 870	9 640	6 147	4 462	3 389	np	2 884	np	40 503
September Quarter	11 749	10 093	6 000	4 428	3 381	np	2 956	np	40 708
December Quarter	11 877	10 010	6 089	4 339	3 410	1 707	2 973	400	40 805
2008									
March Quarter	11 829	10 026	6 087	4 296	3 443	1 691	2 898	400	40 670
CABINS FLATS, UNITS AND VILLAS (no.)									
2007									
March Quarter	12 180	6 300	6 068	2 636	3 309	705	999	105	32 302
June Quarter	12 176	6 532	6 064	2 642	3 296	np	1 025	np	32 540
September Quarter	12 464	6 579	6 299	2 652	3 247	np	1 030	np	33 089
December Quarter	12 170	6 445	6 343	2 678	3 374	730	1 062	105	32 907
2008									
March Quarter	12 351	6 666	6 360	2 728	3 473	679	1 056	105	33 418

np not available for publication but included in totals where applicable, unless otherwise indicated

(a) Comprising establishments with 40 or more powered sites and cabins, flats, units and villas.

Period	New South Wales	Victoria	Queensland	South Australia	Western Australia	Tasmania	Northern Territory	Australian Capital Territory	Australia
TOTAL CAPACITY (no.)									
2007									
March Quarter	78 152	56 223	40 018	20 043	25 126	5 604	8 486	936	234 588
June Quarter	78 027	55 942	39 820	19 888	25 061	np	8 595	np	233 881
September Quarter	77 457	56 339	39 556	19 861	25 119	np	8 712	np	233 596
December Quarter	77 551	56 338	39 888	19 845	25 366	5 642	8 735	936	234 301
2008									
March Quarter	77 164	56 599	39 723	19 860	25 485	5 470	8 586	936	233 823
PERSONS EMPLOYED (no.)									
2007									
March Quarter	3 281	1 892	1 823	883	1 277	299	553	82	10 090
June Quarter	3 141	1 820	1 882	857	1 316	np	561	np	9 925
September Quarter	3 216	1 813	1 904	875	1 308	np	575	np	10 039
December Quarter	3 457	1 985	1 890	881	1 377	298	473	92	10 453
2008									
March Quarter	3 344	2 002	1 872	880	1 388	305	511	84	10 386
SITES OCCUPIED BY LONG-TERM GUESTS (no.)									
2007									
March Quarter	11 252	5 909	10 677	1 688	4 742	305	519	150	35 242
June Quarter	11 074	5 782	10 932	1 621	4 993	np	566	np	35 432
September Quarter	11 060	5 791	11 159	1 694	5 052	np	613	np	35 835
December Quarter	11 007	5 626	10 989	1 562	5 200	325	605	155	35 469
2008									
March Quarter	10 595	5 622	10 642	1 601	5 374	315	481	155	34 785
OTHER SITES PERMANENTLY RESERVED (no.)									
2007									
March Quarter	20 306	15 236	1 327	2 144	1 901	991	9	5	41 919
June Quarter	19 866	15 281	1 362	2 088	1 800	np	3	np	41 466
September Quarter	20 394	15 133	1 334	2 172	1 840	np	4	np	41 856
December Quarter	19 602	15 081	1 215	2 190	1 715	994	12	5	40 814
2008									
March Quarter	20 223	15 637	1 142	2 163	1 681	965	17	5	41 833
SITE NIGHTS OCCUPIED ('000)									
2007									
March Quarter	4 337.6	2 834.7	1 776.7	805.2	1 102.6	242.1	116.9	32.3	11 248.2
June Quarter	3 943.4	2 472.3	2 130.0	719.1	1 195.3	np	311.8	np	10 972.2
September Quarter	4 000.1	2 350.8	2 470.8	673.8	1 346.5	np	402.0	np	11 432.8
December Quarter	4 224.9	2 647.4	2 007.3	777.6	1 154.7	215.2	177.0	30.0	11 234.1
2008									
March Quarter	4 413.8	2 996.7	1 783.3	835.9	1 185.1	263.9	117.1	31.4	11 627.1

np not available for publication but included in totals where applicable, unless otherwise indicated

(a) Comprising establishments with 40 or more powered sites and cabins, flats, units and villas.

<i>Period</i>	<i>New South Wales</i>	<i>Victoria</i>	<i>Queensland</i>	<i>South Australia</i>	<i>Western Australia</i>	<i>Tasmania</i>	<i>Northern Territory</i>	<i>Australian Capital Territory</i>	<i>Australia</i>
---------------	--------------------------------	-----------------	-------------------	----------------------------	------------------------------	-----------------	-------------------------------	---	------------------

SITE OCCUPANCY RATE (%)

2007									
March Quarter	61.7	56.1	49.4	44.8	49.2	48.9	16.0	38.4	53.5
June Quarter	55.5	49.4	58.8	40.0	52.5	np	39.9	np	51.8
September Quarter	56.2	47.2	67.9	36.9	58.4	np	50.2	np	53.8
December Quarter	59.2	52.3	54.7	42.6	49.5	41.5	22.2	34.9	52.4
2008									
March Quarter	62.9	58.2	49.4	46.3	51.2	53.1	15.1	36.9	54.7

TAKINGS FROM ACCOMMODATION (\$'000)

2007									
March Quarter	94 371	47 280	42 691	19 739	28 089	6 522	4 121	1 198	244 010
June Quarter	74 925	34 434	53 563	16 064	29 326	np	10 461	np	223 245
September Quarter	72 353	36 159	65 200	14 697	34 818	np	12 922	np	239 949
December Quarter	94 985	47 434	53 095	19 288	31 512	5 002	5 983	1 002	258 303
2008									
March Quarter	104 591	56 996	46 763	21 789	35 211	7 795	4 754	1 123	279 021

np not available for publication but included in totals where applicable, unless otherwise indicated

(a) Comprising establishments with 40 or more powered sites and cabins, flats, units and villas.

	New South Wales	Victoria	Queensland	South Australia	Western Australia	Tasmania	Northern Territory	Australian Capital Territory	Australia
--	-----------------------	----------	------------	--------------------	----------------------	----------	-----------------------	------------------------------------	-----------

LETTING ENTITIES (a) (no.)

2007									
March Quarter	95	16	36	8	2	1	—	—	158
June Quarter	95	15	35	8	2	1	—	—	156
September Quarter	95	15	34	8	2	1	—	—	155
December Quarter	94	15	34	8	2	2	—	—	155
2008									
March Quarter	94	15	34	8	2	2	—	—	155

SINGLE BEDROOM HOLIDAY FLATS, UNITS AND HOUSES (no.)

2007									
March Quarter	414	52	154	np	np	np	—	—	637
June Quarter	400	50	151	10	np	np	—	—	617
September Quarter	399	44	149	np	np	np	—	—	605
December Quarter	400	52	146	10	np	np	—	—	611
2008									
March Quarter	386	95	160	9	np	np	—	—	653

MULTIPLE BEDROOM HOLIDAY FLATS, UNITS AND HOUSES (no.)

2007									
March Quarter	7 585	1 711	2 902	np	np	np	—	—	13 106
June Quarter	7 504	1 661	2 853	719	np	np	—	—	12 913
September Quarter	7 619	1 671	2 779	np	np	np	—	—	12 955
December Quarter	7 533	1 701	2 851	730	np	np	—	—	13 029
2008									
March Quarter	7 653	1 703	2 780	719	np	np	—	—	13 070

TOTAL HOLIDAY FLATS, UNITS AND HOUSES (no.)

2007									
March Quarter	7 999	1 763	3 056	np	np	np	—	—	13 743
June Quarter	7 904	1 711	3 004	729	np	np	—	—	13 530
September Quarter	8 018	1 715	2 928	np	np	np	—	—	13 560
December Quarter	7 933	1 753	2 997	740	np	np	—	—	13 640
2008									
March Quarter	8 039	1 798	2 940	728	np	np	—	—	13 723

BED SPACES (no.)

2007									
March Quarter	43 637	12 098	14 927	np	np	np	—	—	77 033
June Quarter	43 079	11 756	14 463	5 616	np	np	—	—	76 027
September Quarter	44 085	11 727	14 094	np	np	np	—	—	76 631
December Quarter	43 543	11 953	14 204	5 494	np	np	—	—	76 547
2008									
March Quarter	44 080	11 544	14 268	5 647	np	np	—	—	76 903

— nil or rounded to zero (including null cells)

np not available for publication but included in totals where applicable, unless otherwise indicated

(a) The number of managers, owners or real estate agents with 15 or more self-contained units.

	New South Wales	Victoria	Queensland	South Australia	Western Australia	Tasmania	Northern Territory	Australian Capital Territory	Australia
UNIT NIGHTS OCCUPIED ('000)									
2007									
March Quarter	263.5	19.6	138.6	np	np	np	—	—	449.1
June Quarter	150.3	8.4	112.8	8.3	np	np	—	—	285.9
September Quarter	173.1	9.0	134.8	np	np	np	—	—	328.7
December Quarter	220.9	15.8	154.7	11.3	np	np	—	—	411.7
2008									
March Quarter	282.3	18.8	136.5	19.5	np	np	—	—	466.0
UNIT OCCUPANCY RATE (%)									
2007									
March Quarter	36.6	12.7	50.4	np	np	np	—	—	36.4
June Quarter	20.9	5.7	41.3	12.5	np	np	—	—	23.4
September Quarter	23.5	5.7	50.0	np	np	np	—	—	26.4
December Quarter	30.3	9.8	56.1	16.7	np	np	—	—	32.9
2008									
March Quarter	38.6	11.5	51.1	29.5	np	np	—	—	37.4
UNIT LETTINGS ('000)									
2007									
March Quarter	39.0	4.7	29.1	np	np	np	—	—	77.6
June Quarter	23.4	2.2	24.7	4.0	np	np	—	—	55.3
September Quarter	28.3	2.2	25.0	np	np	np	—	—	59.4
December Quarter	38.7	5.4	34.2	4.8	np	np	—	—	84.4
2008									
March Quarter	42.7	4.3	26.5	8.7	np	np	—	—	83.6
AVERAGE LENGTH OF STAY (days)									
2007									
March Quarter	6.8	4.2	4.8	np	np	np	—	—	5.8
June Quarter	6.4	3.7	4.6	2.1	np	np	—	—	5.2
September Quarter	6.1	4.2	5.4	np	np	np	—	—	5.5
December Quarter	5.7	2.9	4.5	2.4	np	np	—	—	4.9
2008									
March Quarter	6.6	4.4	5.2	2.2	np	np	—	—	5.6
TAKINGS FROM ACCOMMODATION (\$'000)									
2007									
March Quarter	30 960	2 789	13 315	np	np	np	—	—	50 314
June Quarter	12 545	894	11 137	1 009	np	np	—	—	26 113
September Quarter	16 647	1 633	14 065	np	np	np	—	—	33 643
December Quarter	25 202	2 313	17 133	1 311	np	np	—	—	46 909
2008									
March Quarter	34 050	2 351	15 084	2 516	np	np	—	—	54 909

— nil or rounded to zero (including null cells)

np not available for publication but included in totals where applicable, unless otherwise indicated

	New South Wales	Victoria	Queensland	South Australia	Western Australia	Tasmania	Northern Territory	Australian Capital Territory	Australia
--	-----------------------	----------	------------	--------------------	----------------------	----------	-----------------------	------------------------------------	-----------

LETTING ENTITIES (a) (no.)

2007									
March Quarter	56	18	309	7	19	7	2	3	421
June Quarter	58	18	311	7	19	7	2	3	425
September Quarter	59	19	312	7	19	7	2	3	428
December Quarter	59	19	316	7	18	7	2	3	431
2008									
March Quarter	58	19	313	7	19	7	2	3	428

SINGLE BEDROOM HOLIDAY FLATS, UNITS AND HOUSES (no.)

2007									
March Quarter	426	279	2 932	np	np	np	np	np	4 241
June Quarter	459	303	3 001	97	np	np	np	np	4 386
September Quarter	445	303	2 976	np	np	np	np	np	4 378
December Quarter	430	302	3 059	101	np	np	np	np	4 351
2008									
March Quarter	428	312	2 975	98	np	np	np	np	4 312

MULTIPLE BEDROOM HOLIDAY FLATS, UNITS AND HOUSES (no.)

2007									
March Quarter	1 065	600	7 748	np	np	np	np	np	10 562
June Quarter	1 100	567	7 699	140	np	np	np	np	10 530
September Quarter	1 133	582	7 754	np	np	np	np	np	10 631
December Quarter	1 196	604	7 883	140	np	np	np	np	10 798
2008									
March Quarter	1 178	591	7 970	140	np	np	np	np	10 863

TOTAL HOLIDAY FLATS, UNITS AND HOUSES (no.)

2007									
March Quarter	1 491	879	10 680	np	np	np	np	np	14 803
June Quarter	1 559	870	10 700	237	np	np	np	np	14 916
September Quarter	1 578	885	10 730	np	np	np	np	np	15 009
December Quarter	1 626	906	10 942	241	np	np	np	np	15 149
2008									
March Quarter	1 606	903	10 945	238	np	np	np	np	15 175

BED SPACES (no.)

2007									
March Quarter	6 506	3 647	41 268	np	np	np	np	np	59 971
June Quarter	6 779	3 609	41 031	990	np	np	np	np	60 127
September Quarter	6 854	3 772	41 926	np	np	np	np	np	61 331
December Quarter	7 121	3 816	42 982	999	np	np	np	np	62 265
2008									
March Quarter	7 091	3 806	43 179	989	np	np	np	np	62 556

np not available for publication but included in totals where applicable, unless otherwise indicated

(a) The number of owners, managers or real estate agents with 15 or more self-contained units.

	New South Wales	Victoria	Queensland	South Australia	Western Australia	Tasmania	Northern Territory	Australian Capital Territory	Australia
PERSONS EMPLOYED (no.)									
2007									
March Quarter	511	208	1 281	np	np	np	np	np	2 473
June Quarter	534	214	1 276	59	np	np	np	np	2 534
September Quarter	537	220	1 265	np	np	np	np	np	2 527
December Quarter	557	219	1 296	59	np	np	np	np	2 542
2008									
March Quarter	506	227	1 253	59	np	np	np	np	2 450
UNIT NIGHTS OCCUPIED ('000)									
2007									
March Quarter	86.9	48.0	629.5	np	np	np	np	np	888.1
June Quarter	73.7	42.4	544.9	12.5	np	np	np	np	765.7
September Quarter	79.1	51.1	701.7	np	np	np	np	np	931.8
December Quarter	90.5	47.0	690.1	14.8	np	np	np	np	942.5
2008									
March Quarter	88.9	50.2	632.7	15.5	np	np	np	np	894.1
UNIT OCCUPANCY RATE (%)									
2007									
March Quarter	64.7	65.2	65.5	np	np	np	np	np	67.0
June Quarter	51.9	54.6	56.0	58.1	np	np	np	np	56.5
September Quarter	55.3	62.8	71.1	np	np	np	np	np	67.6
December Quarter	60.5	58.0	68.6	66.9	np	np	np	np	67.7
2008									
March Quarter	60.9	61.2	63.5	71.4	np	np	np	np	64.8
UNIT LETTINGS ('000)									
2007									
March Quarter	29.4	8.8	225.2	np	np	np	np	np	301.1
June Quarter	27.5	8.7	203.6	3.8	np	np	np	np	275.0
September Quarter	28.0	9.2	241.0	np	np	np	np	np	312.7
December Quarter	39.0	10.5	264.5	3.6	np	np	np	np	352.7
2008									
March Quarter	31.9	10.5	237.1	4.0	np	np	np	np	320.8
AVERAGE LENGTH OF STAY (days)									
2007									
March Quarter	3.0	5.4	2.8	np	np	np	np	np	2.9
June Quarter	2.7	4.9	2.7	3.3	np	np	np	np	2.8
September Quarter	2.8	5.5	2.9	np	np	np	np	np	3.0
December Quarter	2.3	4.5	2.6	4.1	np	np	np	np	2.7
2008									
March Quarter	2.8	4.8	2.7	3.8	np	np	np	np	2.8
TAKINGS FROM ACCOMMODATION (\$'000)									
2007									
March Quarter	12 223	6 245	78 555	np	np	np	np	np	110 895
June Quarter	8 356	5 186	62 636	1 162	np	np	np	np	87 828
September Quarter	11 504	8 206	84 949	np	np	np	np	np	116 381
December Quarter	13 258	6 498	95 927	1 856	np	np	np	np	129 565
2008									
March Quarter	13 600	7 356	84 717	2 007	np	np	np	np	121 825

np not available for publication but included in totals where applicable, unless otherwise indicated

	New South Wales	Victoria	Queensland	South Australia	Western Australia	Tasmania	Northern Territory	Australian Capital Territory	Australia
--	-----------------------	----------	------------	--------------------	----------------------	----------	-----------------------	------------------------------------	-----------

LETTING ENTITIES (a) (no.)

2007									
March Quarter	151	34	345	15	21	8	2	3	579
June Quarter	153	33	346	15	21	8	2	3	581
September Quarter	154	34	346	15	21	8	2	3	583
December Quarter	153	34	350	15	20	9	2	3	586
2008									
March Quarter	152	34	347	15	21	9	2	3	583

SINGLE BEDROOM HOLIDAY FLATS, UNITS AND HOUSES (no.)

2007									
March Quarter	840	331	3 086	104	379	51	np	np	4 878
June Quarter	859	353	3 152	107	395	50	np	np	5 003
September Quarter	844	347	3 125	108	422	48	np	np	4 983
December Quarter	830	354	3 205	111	325	48	np	np	4 962
2008									
March Quarter	814	407	3 135	107	365	48	np	np	4 965

MULTIPLE BEDROOM HOLIDAY FLATS, UNITS AND HOUSES (no.)

2007									
March Quarter	8 650	2 311	10 650	870	862	161	np	np	23 668
June Quarter	8 604	2 228	10 552	859	878	158	np	np	23 443
September Quarter	8 752	2 253	10 533	855	873	156	np	np	23 586
December Quarter	8 729	2 305	10 734	870	832	193	np	np	23 827
2008									
March Quarter	8 831	2 294	10 750	859	842	193	np	np	23 933

TOTAL HOLIDAY FLATS, UNITS AND HOUSES (no.)

2007									
March Quarter	9 490	2 642	13 736	974	1 241	212	np	np	28 546
June Quarter	9 463	2 581	13 704	966	1 273	208	np	np	28 446
September Quarter	9 596	2 600	13 658	963	1 295	204	np	np	28 569
December Quarter	9 559	2 659	13 939	981	1 157	241	np	np	28 789
2008									
March Quarter	9 645	2 701	13 885	966	1 207	241	np	np	28 898

BED SPACES (no.)

2007									
March Quarter	50 143	15 745	56 195	6 198	6 414	986	np	np	137 004
June Quarter	49 858	15 365	55 494	6 606	6 512	996	np	np	136 154
September Quarter	50 939	15 499	56 020	6 596	6 571	1 006	np	np	137 962
December Quarter	50 664	15 769	57 186	6 493	6 149	1 220	np	np	138 812
2008									
March Quarter	51 171	15 350	57 447	6 636	6 296	1 219	np	np	139 459

np not available for publication but included in totals where applicable, unless otherwise indicated

(a) The number of owners, managers or real estate agents with 15 or more self-contained units.

	New South Wales	Victoria	Queensland	South Australia	Western Australia	Tasmania	Northern Territory	Australian Capital Territory	Australia
UNIT NIGHTS OCCUPIED ('000)									
2007									
March Quarter	350.4	67.7	768.1	35.5	82.4	14.1	np	np	1 337.2
June Quarter	224.0	50.8	657.7	20.8	73.0	6.4	np	np	1 051.7
September Quarter	252.2	60.1	836.5	18.3	68.9	4.5	np	np	1 260.5
December Quarter	311.4	62.8	844.8	26.2	78.8	11.2	np	np	1 354.1
2008									
March Quarter	371.3	69.0	769.2	35.0	81.0	15.3	np	np	1 360.2
UNIT OCCUPANCY RATE (%)									
2007									
March Quarter	41.0	29.6	62.2	40.5	73.8	74.1	np	np	52.2
June Quarter	26.0	22.5	52.7	23.7	63.0	34.1	np	np	40.8
September Quarter	28.6	25.1	66.6	20.6	57.8	23.7	np	np	48.0
December Quarter	35.4	25.9	65.9	29.0	74.1	55.3	np	np	51.2
2008									
March Quarter	42.4	28.1	60.9	39.8	73.8	69.6	np	np	51.8
UNIT LETTINGS ('000)									
2007									
March Quarter	68.3	13.6	254.3	7.5	23.9	7.0	np	np	378.7
June Quarter	50.9	11.0	228.3	7.9	23.0	3.6	np	np	330.3
September Quarter	56.3	11.4	266.0	6.8	24.9	1.8	np	np	372.1
December Quarter	77.7	15.9	298.7	8.4	27.5	4.4	np	np	437.1
2008									
March Quarter	74.6	14.8	263.6	12.8	27.6	6.8	np	np	404.4
AVERAGE LENGTH OF STAY (days)									
2007									
March Quarter	5.1	5.0	3.0	4.8	3.5	2.0	np	np	3.5
June Quarter	4.4	4.6	2.9	2.6	3.2	1.8	np	np	3.2
September Quarter	4.5	5.3	3.1	2.7	2.8	2.4	np	np	3.4
December Quarter	4.0	3.9	2.8	3.1	2.9	2.5	np	np	3.1
2008									
March Quarter	5.0	4.7	2.9	2.7	2.9	2.2	np	np	3.4
TAKINGS FROM ACCOMMODATION (\$'000)									
2007									
March Quarter	43 183	9 034	91 870	4 340	9 035	1 589	np	np	161 209
June Quarter	20 901	6 080	73 773	2 171	7 868	674	np	np	113 941
September Quarter	28 151	9 839	99 014	1 944	7 584	442	np	np	150 025
December Quarter	38 459	8 811	113 060	3 167	9 174	1 311	np	np	176 474
2008									
March Quarter	47 650	9 707	99 801	4 524	10 629	1 828	np	np	176 734

np not available for publication but included in totals where applicable, unless otherwise indicated

Period	New South Wales	Victoria	Queensland	South Australia	Western Australia	Tasmania	Northern Territory	Australian Capital Territory	Australia
ESTABLISHMENTS (no.)									
2007									
March Quarter	102	67	118	27	65	21	22	5	427
June Quarter	101	66	121	27	64	20	22	5	426
September Quarter	101	65	122	29	63	20	21	5	426
December Quarter	100	65	119	29	64	20	22	5	424
2008									
March Quarter	98	63	118	27	63	20	21	5	415
BED SPACES (no.)									
2007									
March Quarter	11 573	8 727	13 043	2 406	5 355	1 629	3 058	979	46 770
June Quarter	11 483	8 647	13 561	2 388	5 343	1 500	3 119	958	46 999
September Quarter	11 480	8 504	13 755	2 867	5 197	1 500	2 877	977	47 157
December Quarter	11 475	8 465	13 615	2 827	5 072	1 508	3 210	977	47 149
2008									
March Quarter	11 255	8 413	13 701	2 470	4 894	1 533	3 146	974	46 386
PERSONS EMPLOYED (no.)									
2007									
March Quarter	685	475	1 160	111	307	146	242	105	3 231
June Quarter	663	473	1 203	105	340	126	257	105	3 272
September Quarter	677	495	1 244	128	307	135	266	102	3 354
December Quarter	733	500	1 295	140	316	139	223	103	3 449
2008									
March Quarter	714	512	1 254	113	318	146	235	99	3 391
GUEST NIGHTS OCCUPIED (no.)									
2007									
March Quarter	700 712	438 644	612 772	90 311	302 160	59 665	100 497	46 271	2 351 032
June Quarter	532 261	295 251	695 990	67 383	285 822	27 859	126 389	38 275	2 069 230
September Quarter	495 124	271 884	717 354	100 259	236 868	16 549	166 878	43 351	2 048 267
December Quarter	656 073	358 557	689 044	93 516	267 129	34 781	125 434	40 171	2 264 705
2008									
March Quarter	688 429	462 481	654 058	99 887	292 160	61 916	94 244	46 551	2 399 726
BED OCCUPANCY RATE (%)									
2007									
March Quarter	67.5	56.4	52.8	41.7	62.7	40.7	38.0	52.5	56.3
June Quarter	51.1	37.7	56.5	31.0	58.8	20.8	44.8	43.9	48.5
September Quarter	47.1	35.1	57.3	38.0	49.5	12.0	63.0	48.2	47.5
December Quarter	62.8	46.4	55.0	36.0	57.2	25.1	42.5	49.6	52.5
2008									
March Quarter	67.3	60.7	53.0	44.4	65.6	44.4	33.0	57.9	57.2
GUEST ARRIVALS (no.)									
2007									
March Quarter	221 122	122 724	264 176	34 474	96 105	30 034	54 296	27 486	850 417
June Quarter	170 236	80 005	295 783	26 550	73 975	14 023	55 628	17 538	733 738
September Quarter	156 877	74 342	278 740	43 263	65 532	10 070	55 978	20 381	705 183
December Quarter	177 892	108 341	262 159	34 724	73 629	18 931	52 562	19 490	747 728
2008									
March Quarter	207 636	138 954	257 308	35 170	76 541	36 184	52 027	21 150	824 970

(a) Comprising establishments with 25 or more bed spaces.

<i>Period</i>	<i>New South Wales</i>	<i>Victoria</i>	<i>Queensland</i>	<i>South Australia</i>	<i>Western Australia</i>	<i>Tasmania</i>	<i>Northern Territory</i>	<i>Australian Capital Territory</i>	<i>Australia</i>
---------------	--------------------------------	-----------------	-------------------	----------------------------	------------------------------	-----------------	-------------------------------	---	------------------

AVERAGE LENGTH OF STAY (*days*)

2007									
March Quarter	3.2	3.6	2.3	2.6	3.1	2.0	1.9	1.7	2.8
June Quarter	3.1	3.7	2.4	2.5	3.9	2.0	2.3	2.2	2.8
September Quarter	3.2	3.7	2.6	2.3	3.6	1.6	3.0	2.1	2.9
December Quarter	3.7	3.3	2.6	2.7	3.6	1.8	2.4	2.1	3.0
2008									
March Quarter	3.3	3.3	2.5	2.8	3.8	1.7	1.8	2.2	2.9

TAKINGS FROM ACCOMMODATION (\$'000)

2007									
March Quarter	18 513	11 293	14 204	1 985	6 622	1 240	2 103	1 400	57 361
June Quarter	14 720	7 735	15 919	1 444	6 468	560	3 095	1 107	51 049
September Quarter	13 687	7 220	16 774	2 308	5 442	374	4 254	1 215	51 274
December Quarter	18 869	9 426	16 932	2 122	6 487	771	2 933	1 162	58 703
2008									
March Quarter	19 886	12 706	15 474	2 339	7 285	1 317	2 172	1 366	62 546

(a) Comprising establishments with 25 or more bed spaces.

EXPLANATORY NOTES

INTRODUCTION

1 This publication presents data from the quarterly Survey of Tourist Accommodation (STA). The STA is a mailout collection that completely enumerates all in-scope accommodation establishments within Australia.

SCOPE

2 From March quarter 2005, the scope of the STA comprises the following categories of establishments:

- licensed hotels and resorts with facilities and 5 or more rooms
- motels, private hotels and guest houses with facilities and 5 or more rooms
- serviced apartments with 5 or more units
- caravan parks with 40 or more powered sites
- holiday flats, units and houses of letting entities with 15 or more rooms or units
- visitor hostels with 25 or more bed spaces.

3 With the exception of caravan parks, these establishments provide predominantly short-term non-residential accommodation, i.e. accommodation which is not leased, and which is provided to guests who would generally stay for periods of less than two months. Some of these establishments also provide long-term residential accommodation. The amount of such activity is considered to be insignificant and is included in the data presented in this publication.

4 Caravan parks provide either short-term or long-term accommodation. If a caravan park has the majority of sites occupied by paying guests who have stayed continuously for two months or more during the survey period, the caravan park is classified as long-term. Data for caravan parks are presented by short-term and long-term in this publication.

5 Previous to March quarter 2005, the scope of the STA comprised:

- licensed hotels and resorts with facilities and 15 or more rooms
- motels, private hotels and guest houses with facilities and 15 or more rooms
- serviced apartments with 15 or more units.

6 For the four quarters of 2000 and 2003, the scope of the STA was expanded to include:

- caravan parks with 40 or more powered sites
- holiday flats, units and houses of letting entities with 15 or more rooms or units
- visitor hostels with 25 or more bed spaces.

COVERAGE

7 The main source of coverage is from the Australian Automobile Association through AAA Tourism Pty Ltd. This is supplemented by notification of new tourism developments and their likely opening dates in selected guides, major tourism journals and periodicals and newspapers. Periodic comparison with lists of accommodation establishments provided by the various tourism organisations and industry associations is also undertaken.

TAKINGS FROM ACCOMMODATION

8 From 1 July 2000, takings from accommodation include gross revenue from the provision of accommodation, including GST. Takings from meals are excluded. Where businesses are unable to provide the data inclusive of GST, it is automatically adjusted by the ABS prior to aggregation and release in output.

STAR GRADING

9 Star grade classifications of establishments are continuously revised by AAA Tourism Pty Ltd. This should be taken into account when making comparisons over time. Any queries regarding the star grading process should be directed to AAA Tourism Pty Ltd on (03) 8601 2200 or email <enquiries@aaatourism.com.au>.

10 Data by star grade for states and territories are included in the data cubes that accompany this publication: Tourist Accommodation, Small Area Data (cat. no. 8635.0.55.002 for national data and cat. no. 8635.1.55.001 – 8635.8.55.001 for state/territory data).

EXPLANATORY NOTES *continued*

STATISTICAL GEOGRAPHY

11 Small area statistics for 2008 are classified to the Australian Standard Geographical Classification (ASGC), 2007 Edition (cat. no. 1216.0). Data are coded to the statistical local area (SLA) level.

12 These SLA data are aggregated to tourism regions as defined by relevant state and territory tourism organisations. Tourism regions are reviewed annually and are subject to boundary and name changes. Where changes have occurred care should be taken when making comparisons with previously published data at this level.

13 Data by tourism regions are no longer presented in this publication. Small area data are provided in the data cubes that accompany this publication: Tourist Accommodation, Small Area Data (cat. no. 8635.0.55.002 for national data and cat. no. 8635.1.55.001 – 8635.8.55.001 for state/territory data).

14 Details of SLAs, the composition of tourism regions and maps of tourism regions are provided in the ABS publication Tourism Region Maps and Concordance Files, Australia (cat. no. 9503.0.55.001) available from the ABS web site <www.abs.gov.au>.

DATA QUALITY

15 The survey does not have a sample component and the data are not subject to sampling variability. However, other inaccuracies collectively referred to as non-sampling error may affect the data. These non-sampling errors may arise from a number of sources, including:

- errors in the reporting of data by providers
- errors in the process of capturing data
- imputation for missing data
- definition and classification errors
- incomplete coverage.

16 Every effort has been made to reduce non-sampling error to a minimum by careful design and testing of questionnaires, and efficient operating procedures and systems used to compile statistics.

EXPLANATORY NOTES *continued*

Response rates

17 The response rates for Australia for the most recent quarters are shown below:

RESPONSE RATES

	<i>Mar</i> <i>Qtr</i> <i>2007</i>	<i>Jun</i> <i>Qtr</i> <i>2007</i>	<i>Sep</i> <i>Qtr</i> <i>2007</i>	<i>Dec</i> <i>Qtr</i> <i>2007</i>	<i>Mar</i> <i>Qtr</i> <i>2008</i>
<i>Activity</i>	%	%	%	%	%
Licensed hotels with facilities					
with 5 to 14 rooms	86.2	83.0	83.2	77.6	84.6
with 15 or more rooms	92.2	87.8	90.1	86.8	90.8
with 5 or more rooms	90.1	85.4	87.7	83.6	88.6
Motels and guest houses					
with 5 to 14 rooms	91.2	89.9	87.9	85.8	89.3
with 15 or more rooms	89.2	89.2	89.8	85.8	90.7
with 5 or more rooms	89.8	89.5	89.2	85.8	90.3
Serviced apartments					
with 5 to 14 rooms	93.5	90.5	88.4	85.5	89.1
with 15 or more rooms	93.3	92.3	92.3	88.6	93.7
with 5 or more rooms	93.3	91.4	91.2	87.7	92.5
Hotels, motels and serviced apartments					
with 5 to 14 rooms	90.5	88.4	86.9	83.9	88.2
with 15 or more rooms	90.7	89.5	90.4	86.6	91.4
with 5 or more rooms	90.6	88.9	89.3	85.7	90.4
Caravan parks	93.1	89.8	90.3	94.7	92.5
Holiday flats, units and houses	93.1	93.6	88.7	92.0	92.5
Visitor hostels	85.2	90.4	90.6	92.2	91.1

Imputation rates

18 Missing data items are replaced by imputed values based on reported data. Average quarterly movements are applied to previously reported data for each non-responding unit to estimate values for missing data items. Only if previously reported data are not available, then data from a similar unit is used as a 'donor' for the missing data items.

EXPLANATORY NOTES *continued*

Imputation rates continued

19 The imputation rates for Australia for the most recent quarters are shown below:

IMPUTATION RATES, Nights occupied(a)

	Mar Qtr 2007	Jun Qtr 2007	Sep Qtr 2007	Dec Qtr 2007	Mar Qtr 2008
<i>Activity</i>	%	%	%	%	%
Licensed hotels with facilities					
with 5 to 14 rooms	12.6	17.8	15.2	20.9	14.1
with 15 or more rooms	1.7	3.7	2.3	3.4	2.9
with 5 or more rooms	2.0	4.1	2.7	3.8	3.2
Motels and guest houses					
with 5 to 14 rooms	7.6	9.2	11.4	13.3	9.9
with 15 or more rooms	7.8	8.7	7.6	10.2	7.3
with 5 or more rooms	7.8	8.7	7.9	9.6	7.5
Serviced apartments					
with 5 to 14 rooms	5.0	7.6	9.8	13.4	8.9
with 15 or more rooms	4.6	5.2	4.6	6.9	4.0
with 5 or more rooms	4.6	5.3	4.8	7.2	4.2
Hotels, motels and serviced apartments					
with 5 to 14 rooms	8.1	10.5	11.8	14.6	10.5
with 15 or more rooms	4.5	5.9	4.8	6.7	4.7
with 5 or more rooms	4.7	6.1	5.1	5.5	5.0
Caravan parks	6.2	7.4	7.7	4.2	7.0
Holiday flats, units and houses	4.7	5.2	10.5	6.3	6.8
Visitor hostels	11.0	9.0	7.6	6.7	8.5

(a) Based on room nights for hotels, motels and serviced apartments; site nights for caravan parks; unit nights for holiday flats, units and houses; and guest nights for visitor hostels

IMPUTATION RATES, Takings from accommodation

	Mar Qtr 2007	Jun Qtr 2007	Sep Qtr 2007	Dec Qtr 2007	Mar Qtr 2008
<i>Activity</i>	%	%	%	%	%
Licensed hotels with facilities					
with 5 to 14 rooms	13.8	18.5	15.2	21.9	14.1
with 15 or more rooms	1.2	2.7	1.6	2.3	2.1
with 5 or more rooms	1.3	2.9	1.8	2.5	2.2
Motels and guest houses					
with 5 to 14 rooms	8.2	9.2	10.9	13.5	10.6
with 15 or more rooms	7.1	8.2	7.1	9.3	7.0
with 5 or more rooms	7.2	8.3	7.4	10.5	7.3
Serviced apartments					
with 5 to 14 rooms	5.2	7.5	9.8	12.7	8.7
with 15 or more rooms	4.0	4.7	4.0	6.4	3.4
with 5 or more rooms	4.1	4.8	4.3	6.6	3.6
Hotels, motels and serviced apartments					
with 5 to 14 rooms	8.2	10.1	11.2	14.5	10.6
with 15 or more rooms	3.4	4.7	3.7	5.1	3.7
with 5 or more rooms	3.6	4.9	4.0	7.1	3.9
Caravan parks	5.1	8.1	7.6	3.4	5.9
Holiday flats, units and houses	4.0	4.8	9.9	7.0	7.5
Visitor hostels	9.3	8.3	7.0	6.6	8.7

SEASONAL ADJUSTMENT

20 Seasonal adjustment is a means of removing the estimated effects of normal seasonal variation from the original time series so that the effect of other influences on the series may be more clearly recognised. Seasonal adjustment procedures do not aim to remove the irregular or non-seasonal influences which may be present in any

EXPLANATORY NOTES *continued*

SEASONAL ADJUSTMENT

continued

particular quarter. Irregular influences that are highly volatile can make it difficult to interpret the movement of the series even after adjustment for seasonal variation, and cannot be assumed to indicate changes in the trend.

21 The way in which seasonally adjusted and trend estimates were calculated changed from a Forward Factor methodology to a Concurrent methodology in March quarter 2003. The Forward Factor method relied on an annual analysis of the original time series to estimate seasonal factors that were to be applied in the forthcoming four quarters. Under this method the projected seasonal factors, or forward factors, were not updated until the next annual analysis. The Concurrent methodology uses the most up to date original time series available at each reference period to estimate seasonal factors thus eliminating the need to use projected seasonal factors.

22 Recently, the ABS has implemented improved methods of producing seasonally adjusted estimates, focused on the application of Autoregressive Integrated Moving Average (ARIMA) modelling techniques. The revision properties of the seasonally adjusted and trend estimates can be improved by the use of ARIMA modelling. ARIMA modelling relies on the characteristics of the series being analysed to project future period data. The projected values are temporary, intermediate values, that are only used internally to improve the estimation of the seasonal factors. The projected data do not affect the original estimates and are discarded at the end of the seasonal adjustment process.

23 From the March quarter 2008, the Survey of Tourist Accommodation collection has implemented ARIMA modelling for the majority of applicable time series. For more information on the details of ARIMA modelling see the feature article 'Use of ARIMA modelling to reduce revisions' in the October 2004 issue of Australian Economic Indicators (cat. no. 1350.0). Any queries regarding the ARIMA modelling should be directed to Time Series Analysis on (02) 6252 6345 or email <time.series.analysis@abs.gov.au>.

TREND ESTIMATES

24 Smoothing the seasonally adjusted series reduces the impact of the irregular component of the seasonally adjusted series and creates the trend estimates. The trend estimates are derived by applying a 7-term Henderson moving average to the quarterly seasonally adjusted series. The Henderson moving average used in the middle of the time series is symmetric but, as the end of a time series is approached, asymmetric forms of the symmetric moving average are applied. Unlike the weights of the standard 7-term Henderson moving average, the weights used with the quarterly data have been tailored to suit the particular characteristics of individual series.

25 While these techniques enable trend estimates for the latest period to be produced, the process does result in revisions to the trend estimates in recent quarters, particularly as additional original estimates become available. For further information refer to Information Paper: A Guide to Interpreting Time Series - Monitoring Trends, 2003 (cat. no. 1349.0) available at the ABS web site <www.abs.gov.au>.

CONFIDENTIALISATION OF DATA

26 Under the Census and Statistics Act, when releasing statistics the ABS is required to do this in a manner that is "not likely" (in a legal sense) to enable the identification of a particular person or organisation. A number of techniques are used to do this, including suppression of information. To ensure provider confidentiality in the Survey of Tourist Accommodation, the ABS uses a computerised process known as Disclosure Avoidance Analysis System (DAAS) to confidentialise the entire tourist accommodation dataset each quarter. This process not only ensures that data are suppressed to ensure individual establishments cannot be identified, but also suppresses data in other (consequential) cells to ensure data cannot be derived through deduction from the information available.

EXPLANATORY NOTES *continued*

CONFIDENTIALISATION OF DATA *continued*

27 While the scope and coverage of the Survey of Tourist Accommodation has been expanded, priority has been given to maintaining the integrity and continuity of the core collection (hotels, motels and guest houses, and serviced apartments with 15 or more rooms). In order to maximise data released from the core collection series and the new components of the expanded scope collection (hotels, motels and guest houses, and serviced apartments with 5-14 rooms), the 'total' series (5 or more rooms) has been used for any consequential confidentiality required where possible.

28 The DAAS process begins by confidentialising at the Statistical Local Area (SLA) level, then across Tourism regions, then at the state level and finally the national level. If there is an SLA that has been made confidential then another SLA will have to be made confidential within that Tourism region to protect the confidentiality of the providers in the SLA that was originally made confidential. Depending on the number of SLAs in the Tourism region the whole Tourism region may need to be made confidential. As a consequence of this, at least one more Tourism region within a state or territory will also be confidentialised. This may also occur at the state/territory level.

USER AGGREGATION OF DATA

29 The aggregation of data by users across time periods should be undertaken with caution, due to the possibility of non-inclusion of confidentialised data (see the above section for more information about confidentialisation). Where one or more cells contributing to a total have been confidentialised (ie, contains the value of n.p.), the resulting aggregated total will be incorrect. However, some broader levels of data may not be affected by confidentialised cells.

30 Where data can be aggregated (ie, no confidentialised cells are included) for calendar and financial year/s purposes, the data items Establishments, Rooms, Persons employed and Bed spaces should not be aggregated. For these items it is recommended that for calendar years, the value of the December quarter is used, and for financial years, the value of the June quarter is used.

31 Any data items that have been derived from other items collected in the survey cannot be aggregated (ie, all those with labels ending in 'rate' or commencing with 'average'). These items must be re-derived based on the aggregation of each of the quarterly items collected in the survey used in the derivation of the rate or average (see Glossary for formulas).

32 Users are cautioned against deriving any non-standard aggregations (eg, aggregation of selected star gradings such as 4-star and 5-star; aggregation of selected geographical areas such as capital city areas and balance of state; aggregation of selected activities such as hotels and motels combined). This is because data are confidentialised based on the standard data item structure.

EFFECTS OF ROUNDING

33 Where figures have been rounded, discrepancies may occur between totals and the sum of the component items.

RELATED PUBLICATIONS

34 Other ABS publications and products which may be of interest are outlined below.

EXPLANATORY NOTES *continued*

RELATED PUBLICATIONS

continued

All publications released from 1998 onwards are available on the ABS web site <www.abs.gov.au>.

Tourist Accommodation, Small Area Data (cat. no. 8635.0.55.002) (data cube for Australia – issued quarterly)

Tourist Accommodation, Small Area Data (cat. no. 8635.1.55.001–8635.8.55.001) (data cubes for each state/territory – issued quarterly)

Tourism Region Maps and Concordance Files, Australia (cat. no. 9503.0.55.001) (annual)

Tourist Accommodation, Australia, Expanded Scope Collection (cat. no. 8635.0.55.001) (irregular)

Short-term Visitor Arrivals Estimates, Australia (cat. no. 3401.0.55.001) (issued monthly)

Overseas Arrivals and Departures, Australia (cat. no. 3401.0) (issued monthly)

Australian National Accounts, Tourism Satellite Account (cat. no. 5249.0) (annual)

35 The catalogue of current publications and other products is available from the ABS web site <www.abs.gov.au>. The ABS also issues release advices on the web site which detail products to be released both in the coming week and the next six months.

ABS DATA AVAILABLE ON REQUEST

36 As well as the statistics included in this publication, the ABS has other relevant data available on request. Inquiries should be made to the National Information and Referral Service on 1300 135 070.

GLOSSARY

Average length of stay	<p>Average number of days each guest stayed during the reference period. It is a derived item calculated by dividing the number of guest nights occupied by the number of guest arrivals with the result expressed as a number of days,</p> $\text{Average length of stay(days)} = \frac{\text{Guest nights occupied}}{\text{Guest arrivals}}$
Average takings per available room night	<p>The takings from accommodation divided by the total number of room nights available for the survey period,</p> $\text{Average takings per available room night(\$)} = \frac{\text{Takings from accommodation}}{\text{Room nights available}}$
Average takings per room night occupied	<p>The takings from accommodation divided by the total number of room nights occupied for the survey period,</p> $\text{Average takings per room night occupied(\$)} = \frac{\text{Takings from accommodation}}{\text{Room nights occupied}}$
Bed occupancy rate	<p>The bed occupancy rate represents bed occupancy expressed as a percentage of total capacity available during the survey period,</p> $\text{Bed occupancy rate (\%)} = \frac{\text{Guest nights occupied}}{\text{Guest nights available}} * 100$
Bed spaces	<p>The maximum number of bed spaces normally in place available to accommodate paying guests during the survey period. Three-quarter beds are counted as one bed space; double beds as two bed spaces. Cots and divans not normally used as beds are excluded.</p>
Cabins, flats, units and villas	<p>The maximum number of cabins, flats, units and villas available at caravan parks for accommodating paying guests during the survey period.</p>
Capacity	<p>Capacity in terms of rooms/units/apartments/suites, visitor hostel bed spaces, holiday flats/units/houses or caravan park sites is the maximum number available to accommodate paying guests on the last day of the survey period. Capacity closed temporarily for seasonal reasons is included.</p>
Caravan park sites	<p>The measure of total caravan park capacity available for accommodating paying guests during the survey period. Includes on-site vans, other powered sites, unpowered sites and cabins, flats, units and villas.</p>
Caravan parks	<p>Establishments with 40 or more powered sites and cabins, flats, units and villas which provide either short-term or long-term accommodation to the general public and which provide powered sites for caravans and toilet, shower and laundry facilities for guests.</p>
Caravan parks, long-term	<p>Caravan parks where the majority of paying guests occupied sites for periods of two months or more.</p>
Caravan parks, short-term	<p>Caravan parks where the majority of paying guests occupied sites for periods of less than two months.</p>
Establishments	<p>The number of licensed hotels and resorts, motels and guest houses, serviced apartments, caravan parks and visitor hostels within the scope of the survey which operated for any part of the survey period, or which closed temporarily for the quarter for seasonal reasons.</p>
Guest arrivals	<p>The total number of paying guests counted only on the first night they stayed at the accommodation establishment during the survey period.</p> <p>For holiday flats, units and houses this is the same as unit lettings.</p> <p>This data item is not collected for caravan parks.</p>
Guest nights available	<p>The total number of nights available to all paying guests during the survey period.</p> <p>This is derived from the number of bed spaces multiplied by the number of days for which they were available during the survey period. For establishments closing (other than for seasonal reasons) or opening during this period, operating periods only are included.</p>

GLOSSARY *continued*

Guest nights occupied	The total number of paying guests counted on each night they stayed at the accommodation establishment during the survey period.
Holiday flats, units and houses	The total number of holiday flats, units and houses (excluding establishments predominantly operated on a time-share basis) operated by letting entities (i.e. owners, managers or real estate agents) who have sole letting rights to at least 15 flats, units or houses for short-term letting. These flats, units or houses should be mainly self-contained in terms of cooking, bath (or shower) and toilet facilities and should not have breakfast available for guests. Data for holiday flats, units or houses include short-term owner operators as well as paying guest accommodation.
Hotels	See licensed hotels and resorts with facilities.
Letting entities	For holiday flats, units and houses, the number of owners, managers or real estate agents within the scope of the survey who operated for any part of the survey period.
Licensed hotels and resorts with facilities	Establishments with five or more rooms which are licensed to operate a public bar and which provide accommodation on a room/suite basis, with a bath/shower and toilet in most guest rooms, but which do not have full cooking facilities (i.e. hot plates and oven/microwave) in most guest rooms.
Motels, private hotels and guest houses with facilities	Establishments with five or more rooms which are not licensed to operate a public bar, and which provide accommodation on a room/suite basis, with a bath/shower and toilet in most guest rooms, but which do not have full cooking facilities (i.e. hot plates and oven/microwave) in most guest rooms.
Multiple bedroom holiday flats, units and houses	The total number of holiday flats, units and houses available with multiple bedrooms.
Occupancy	<p>Occupancy in terms of room nights, unit nights or site nights occupied refers to the total number of nights each room, unit or caravan park was occupied during the survey period.</p> <p>Occupancy in terms of guest nights refers to the total number of paying guests counted on each night they stayed at the accommodation establishment during the survey period.</p>
On-site vans	The maximum number of vans owned or leased by the establishment for the purpose of providing accommodation to the general public.
Other powered sites	The maximum number of sites with provision for connection to electric power supply, available at caravan parks for accommodating paying guests during the survey period, excluding powered sites occupied by on-site vans, and cabins, flats, units and villas.
Other sites permanently reserved	The total number of powered and unpowered sites, on-site vans and cabins, flats, units and villas continuously let for two months or more on the last day of the survey period to tenants who occupy the sites only on a casual or sporadic basis.
Persons employed	The total number of persons working at each accommodation establishment at the end of the survey period (including working proprietors and those working on other than accommodation activities). This data item is not applicable to holiday flats, units and houses let by real estate agents.
Room nights available	The number of rooms/units available multiplied by the number of days for which they were available during the survey period. For establishments closing (other than for seasonal reasons) or opening during this period, operating periods only are included.
Room nights occupied	The number of nights each guest room/unit was occupied by a paying guest during the survey period.
Room occupancy rate	<p>The room occupancy rate represents room occupancy expressed as a percentage of total capacity available during the survey period,</p> $\text{Room occupancy rate (\%)} = \frac{\text{Room nights occupied}}{\text{Room nights available}} * 100$

GLOSSARY *continued*

Room occupancy rate <i>continued</i>	providing that, for establishments closing (other than for seasonal reasons) or opening during the survey period, the denominator of the above expression includes only operating periods.
Rooms	The maximum number of rooms available for accommodating short-term paying guests at each licensed hotel and resort, motel and guest house and serviced apartment during the survey period. Units, apartments and suites are treated as rooms for these types of establishments in these survey results.
Serviced apartments	Establishments with five or more units which mostly comprise self-contained units at the same location, and which are available on a unit/apartment basis to the general public for a minimum of one night. The units should have full cooking facilities (i.e. hot plates and oven/microwave), refrigerator and bath/shower and toilet facilities; all bed linen and towels should be provided, and daily servicing (i.e. cleaning and bed making) must be available through the on-site management, although this service may not necessarily be used.
Single bedroom holiday flats, units and houses	The total number of holiday flats, units and houses available with a single bedroom.
Site nights available	The number of caravan park sites available multiplied by the number of days for which they were available during the survey period. For establishments closing (other than for seasonal reasons) or opening during this period, operating periods only are included.
Site nights occupied	The total number of nights each caravan park site was occupied during the survey period.
Site occupancy rate	<p>The site occupancy rate for caravan parks represents site occupancy expressed as a percentage of total capacity available during the survey period,</p> $\text{Site occupancy rate (\%)} = \frac{\text{Site nights occupied}}{\text{Site nights available}} * 100$ <p>providing that, for establishments closing (other than for seasonal reasons) or opening during the survey period, the denominator of the above expression includes only operating periods.</p>
Sites occupied by long-term guests	The total number of caravan park sites occupied on the last day at the end of the survey period by guests who have stayed continuously for two months or more.
Star grading	<p>The grading of hotels, motels and guest houses with facilities and serviced apartments is based on the classification system owned by AAA Tourism Pty Ltd. The gradings are allocated according to a points system based on the amenities and facilities available to guests. Details of the grading scheme are contained in the publication <i>Accommodation Guide</i> published by AAA Tourism Pty Ltd for each of the individual Australian Motoring Organisations. For the purpose of classifying establishments to a star grading in this publication, 'half' star gradings are ignored (e.g. a two and a half star grading has been shown as two star).</p> <p>While coverage has significantly improved, some establishments (including some competing in the four and five star markets and having significant takings) still remain outside the star grading scheme. These establishments have been given a star grading of 'ungraded'.</p>
Takings from accommodation	<p>Since 1 July 2000, takings from accommodation include gross revenue from the provision of accommodation, including GST. Takings from meals are excluded. In cases where takings from accommodation data cannot be provided inclusive of GST the amount of GST payable is estimated and the data revised accordingly.</p> <p>Takings from accommodation for each month generally represent the takings received during that month. Where payments are received in advance of, or after the provision of accommodation to guests, the monthly figure for takings from accommodation may not necessarily bear a direct relationship to the number of guests accommodated during the month.</p>

GLOSSARY *continued*

Unit lettings	The total number of times a holiday flat, unit or house was occupied by a new tenant, counted only on the first night it was occupied by the new tenant. This is the equivalent of guest arrivals.
Unit nights available	The number of holiday flats, units and houses available multiplied by the number of days for which they were available during the survey period. For establishments closing (other than for seasonal reasons) or opening during this period, operating periods only are included.
Unit nights occupied	The total number of nights each holiday flat, unit or house was occupied during the survey period.
Unit occupancy rate	<p>The unit occupancy rate for holiday flats, units and houses represents unit occupancy expressed as a percentage of total capacity available during the survey period,</p> $\text{Unit occupancy rate (\%)} = \frac{\text{Unit nights occupied}}{\text{Unit nights available}} * 100$ <p>providing that, for letting entities closing (other than for seasonal reasons) or opening during the survey period, the denominator of the above expression includes only operating periods.</p>
Unpowered sites	The maximum number of sites with no provision for connection to electric power supply, available at caravan parks for accommodating paying guests during the survey period.
Visitor hostels	Establishments with 25 or more bed spaces which provide accommodation to visitors on a bed basis (rather than by room). This category does not include establishments providing charity type accommodation (e.g. Salvation Army hostels) nor hotels, motels and guest houses without in-room facilities which provide accommodation on a per room basis.

FOR MORE INFORMATION . . .

INTERNET

www.abs.gov.au the ABS website is the best place for data from our publications and information about the ABS.

INFORMATION AND REFERRAL SERVICE

Our consultants can help you access the full range of information published by the ABS that is available free of charge from our website. Information tailored to your needs can also be requested as a 'user pays' service. Specialists are on hand to help you with analytical or methodological advice.

PHONE

1300 135 070

EMAIL

client.services@abs.gov.au

FAX

1300 135 211

POST

Client Services, ABS, GPO Box 796, Sydney NSW 2001

FREE ACCESS TO STATISTICS

All statistics on the ABS website can be downloaded free of charge.

WEB ADDRESS

www.abs.gov.au